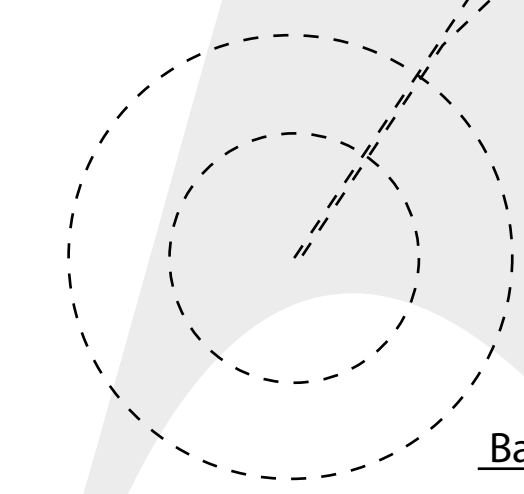
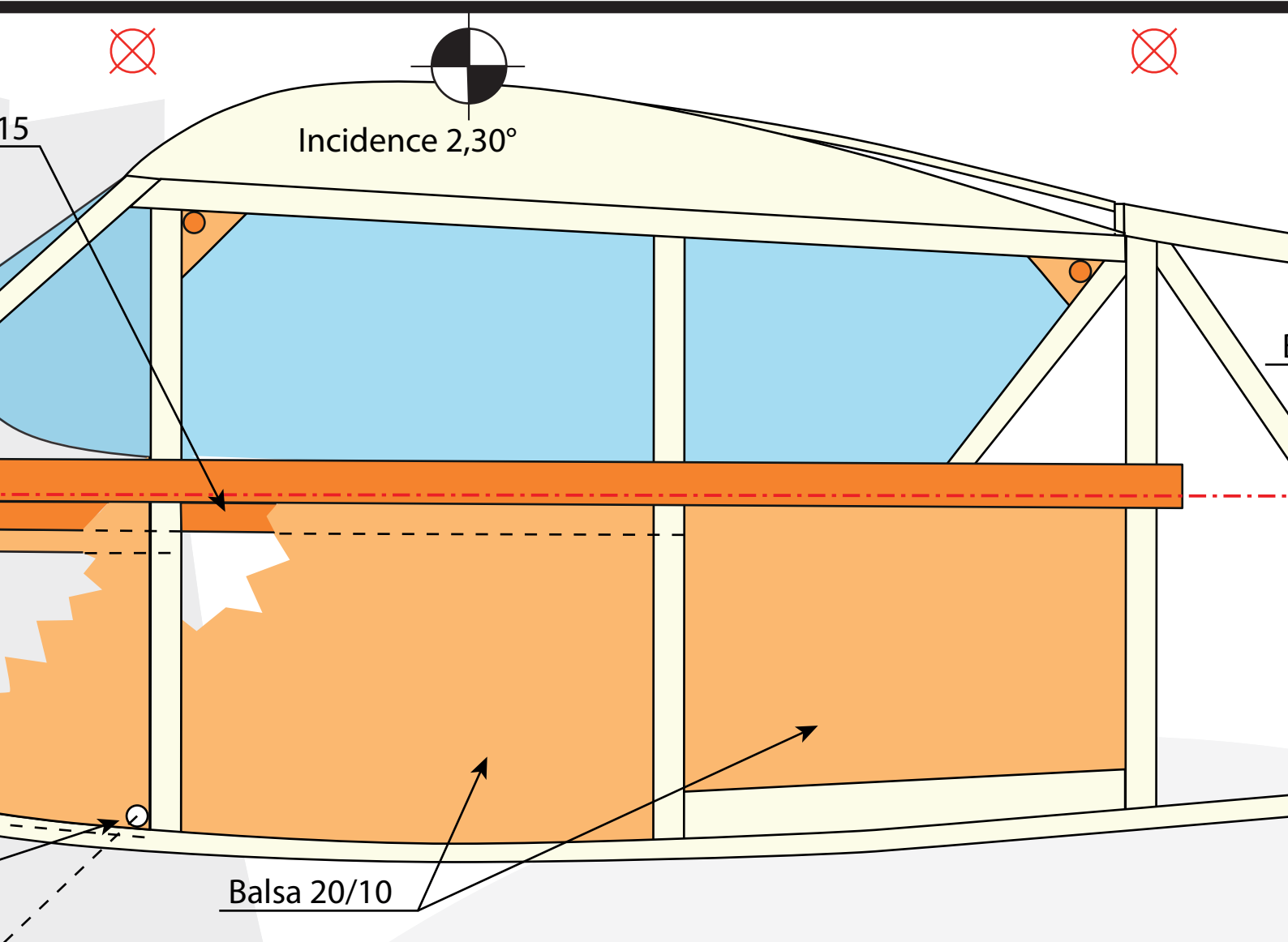


# LE ROUGE

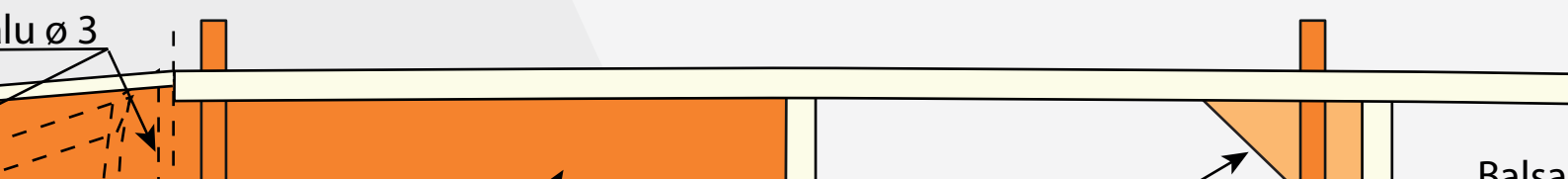


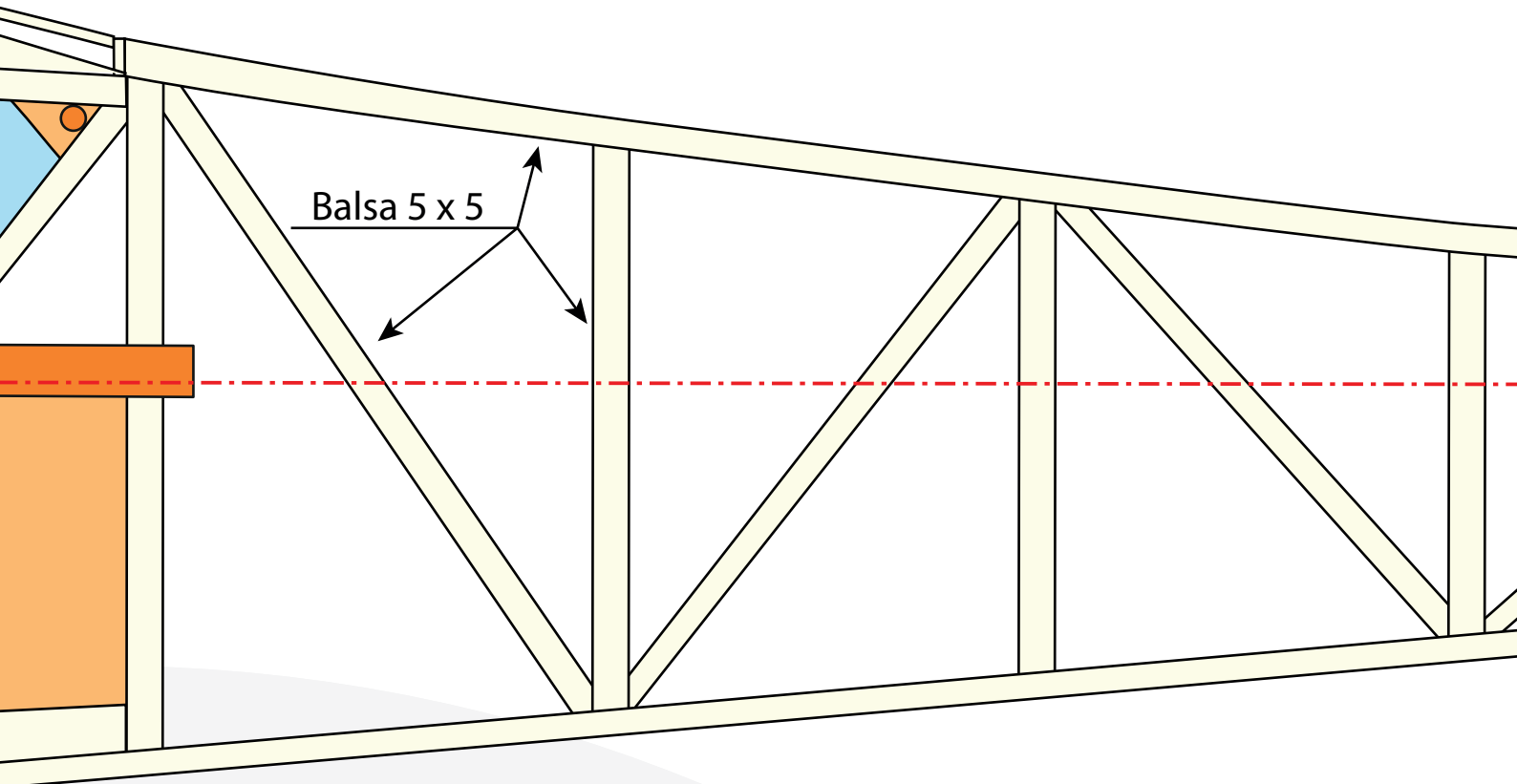
po



# GE-GORGE

Motomodèle de M. Jarry  
pour moteur 0,8 ou 1,5 cm<sup>3</sup>  
Envergure 114 cm

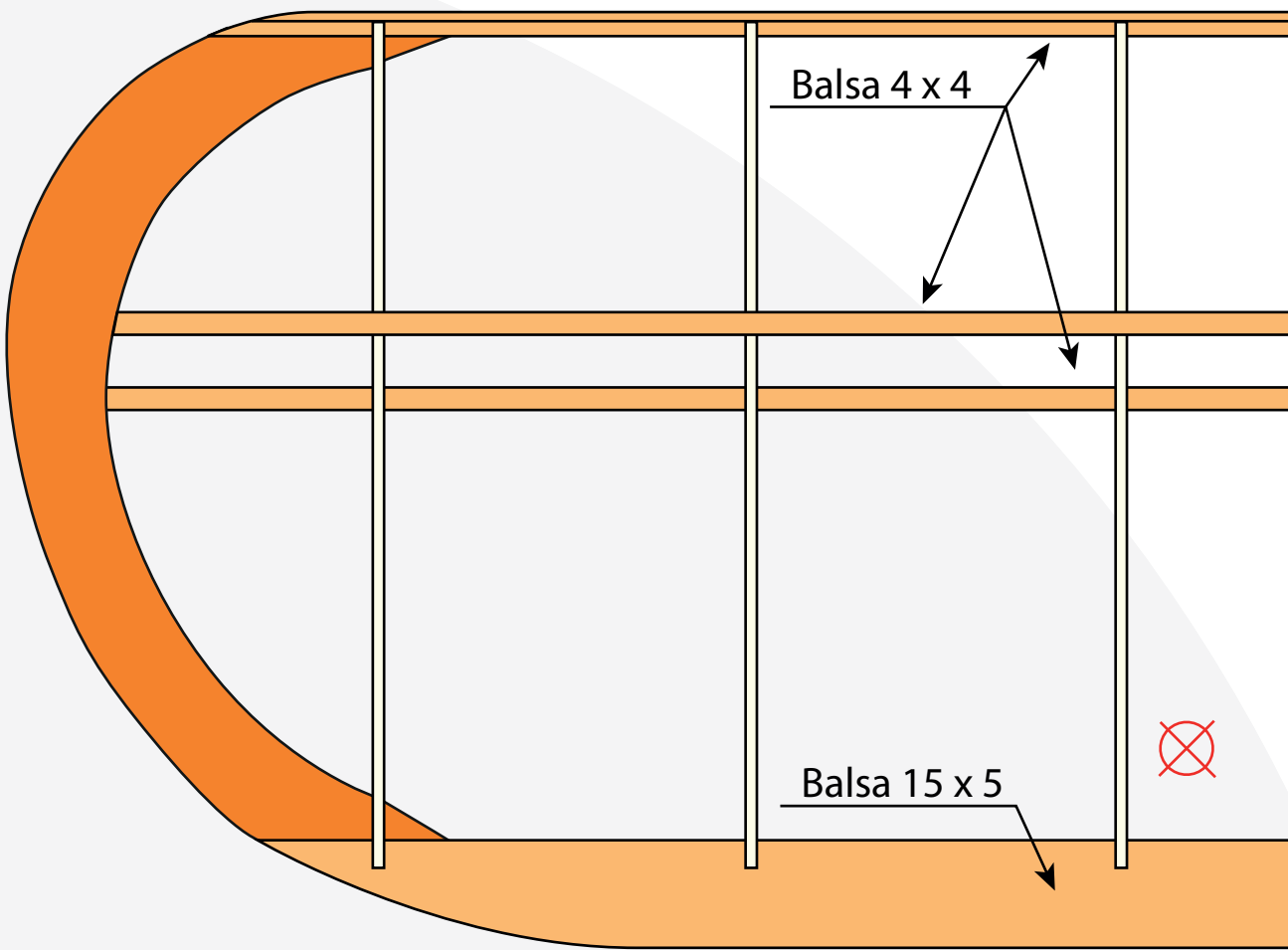




Balsa 5 x 5

E

rry  
m3  
cm



Balsa 4 x 4

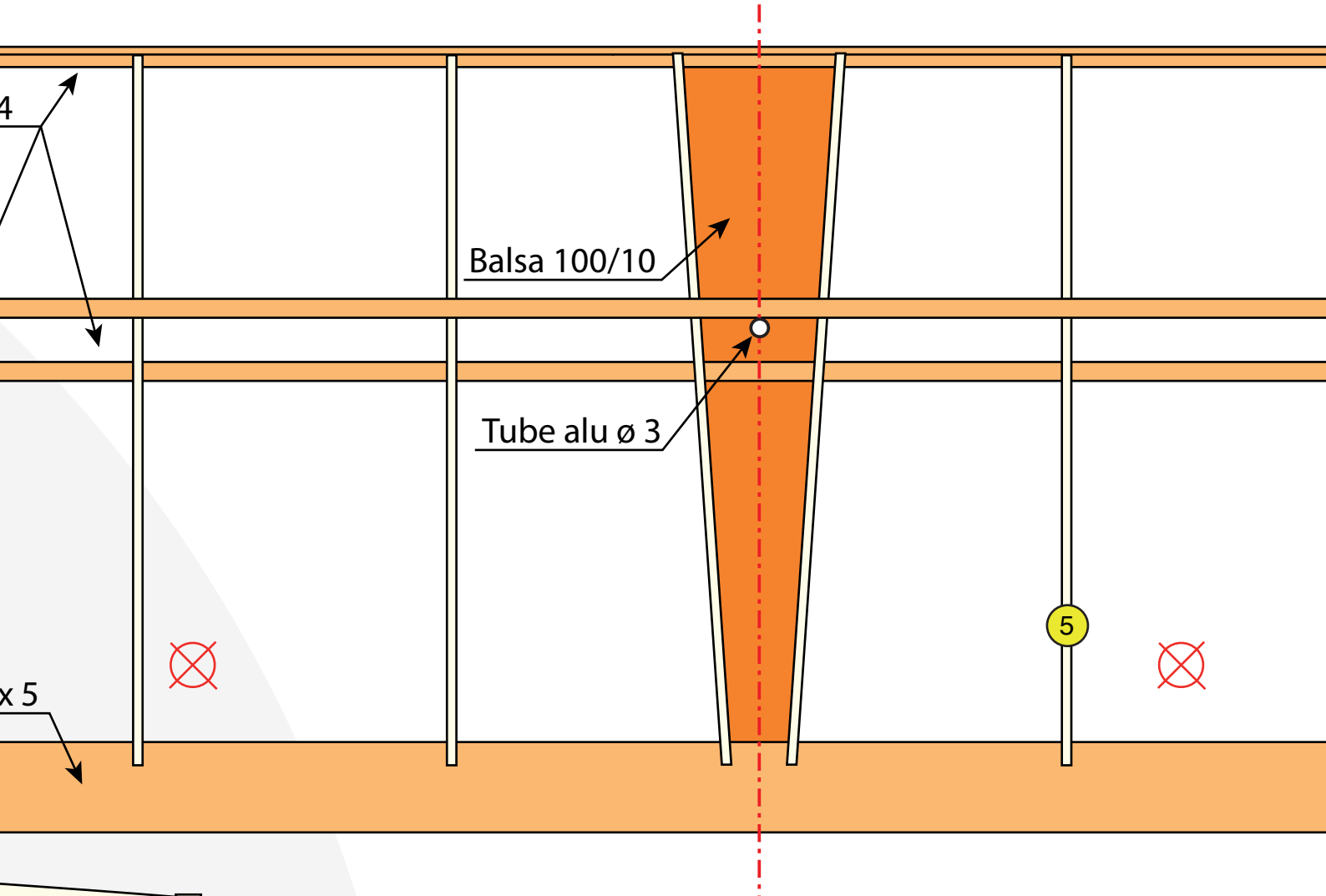
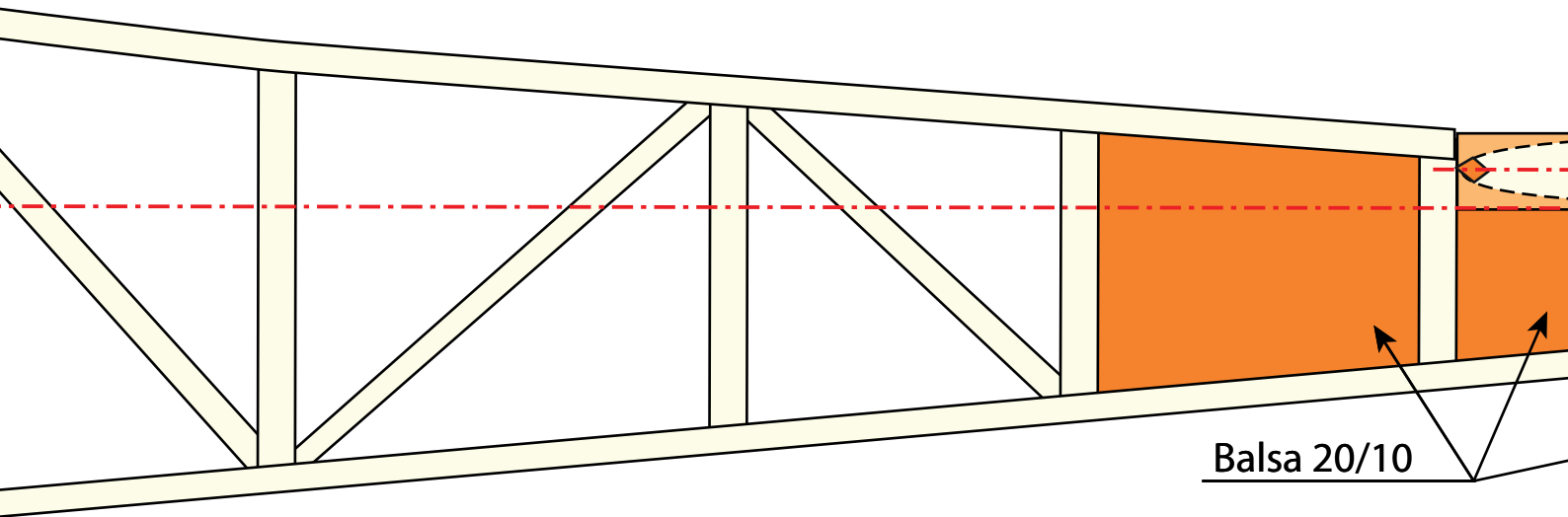
Balsa 15 x 5

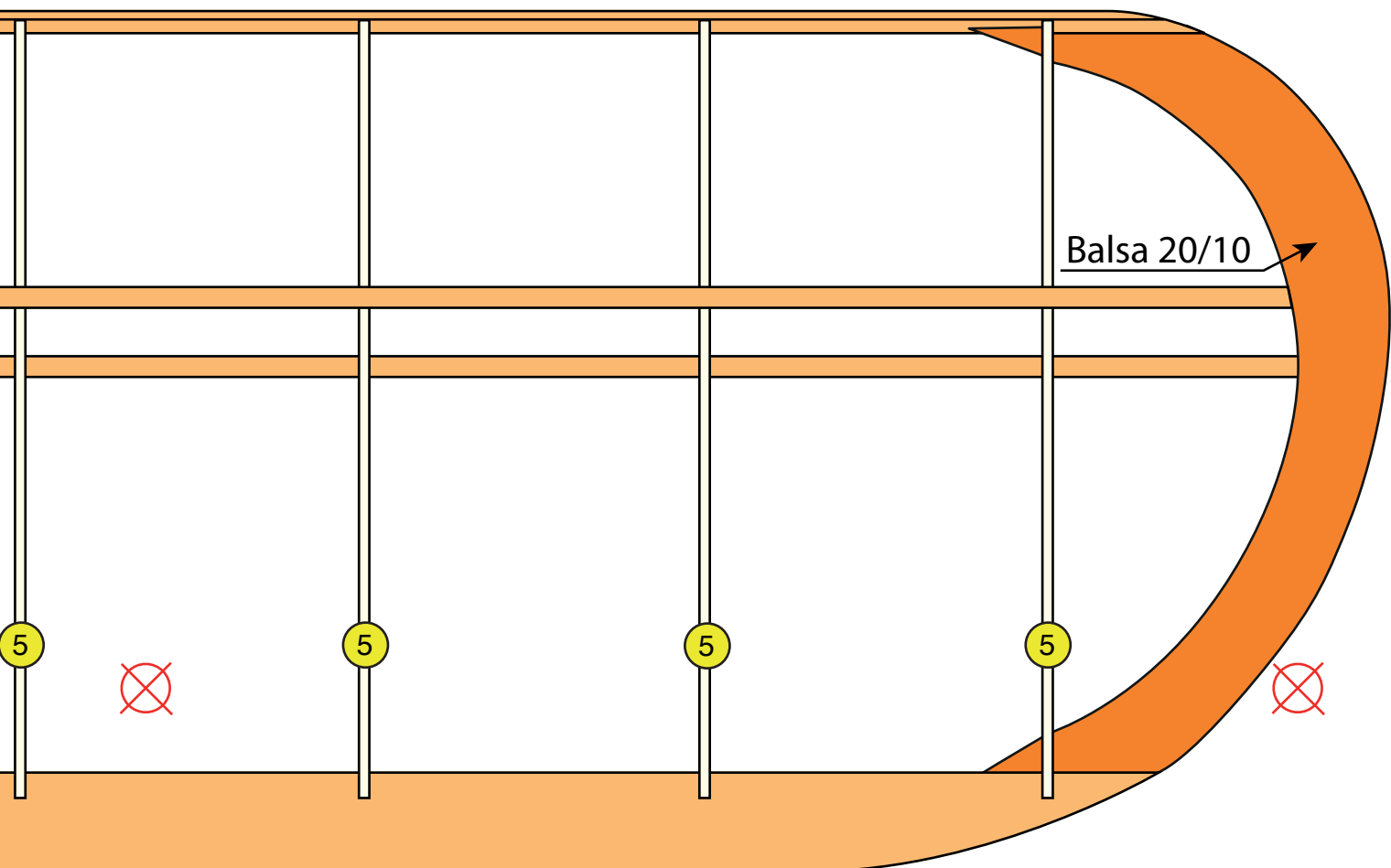
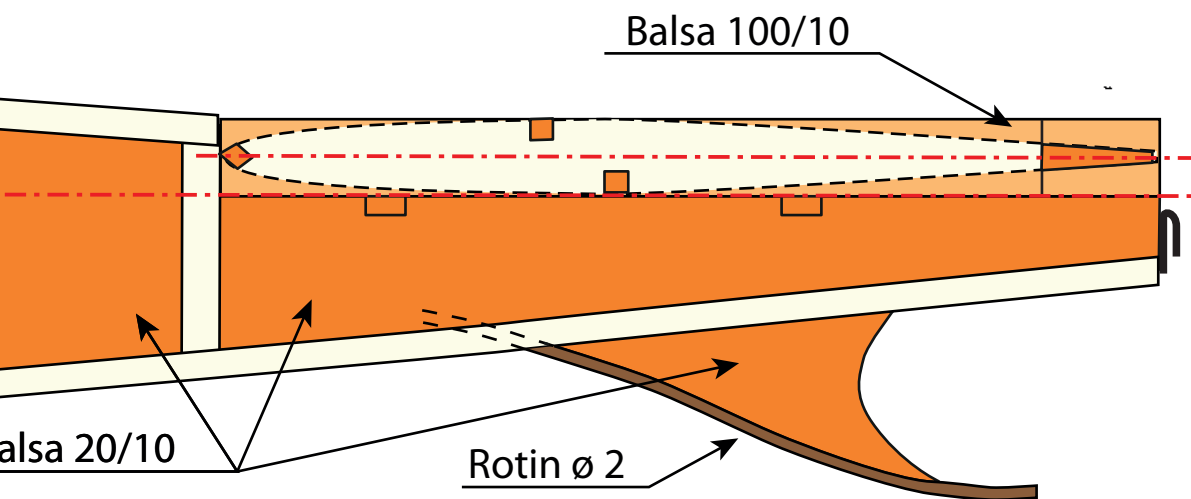


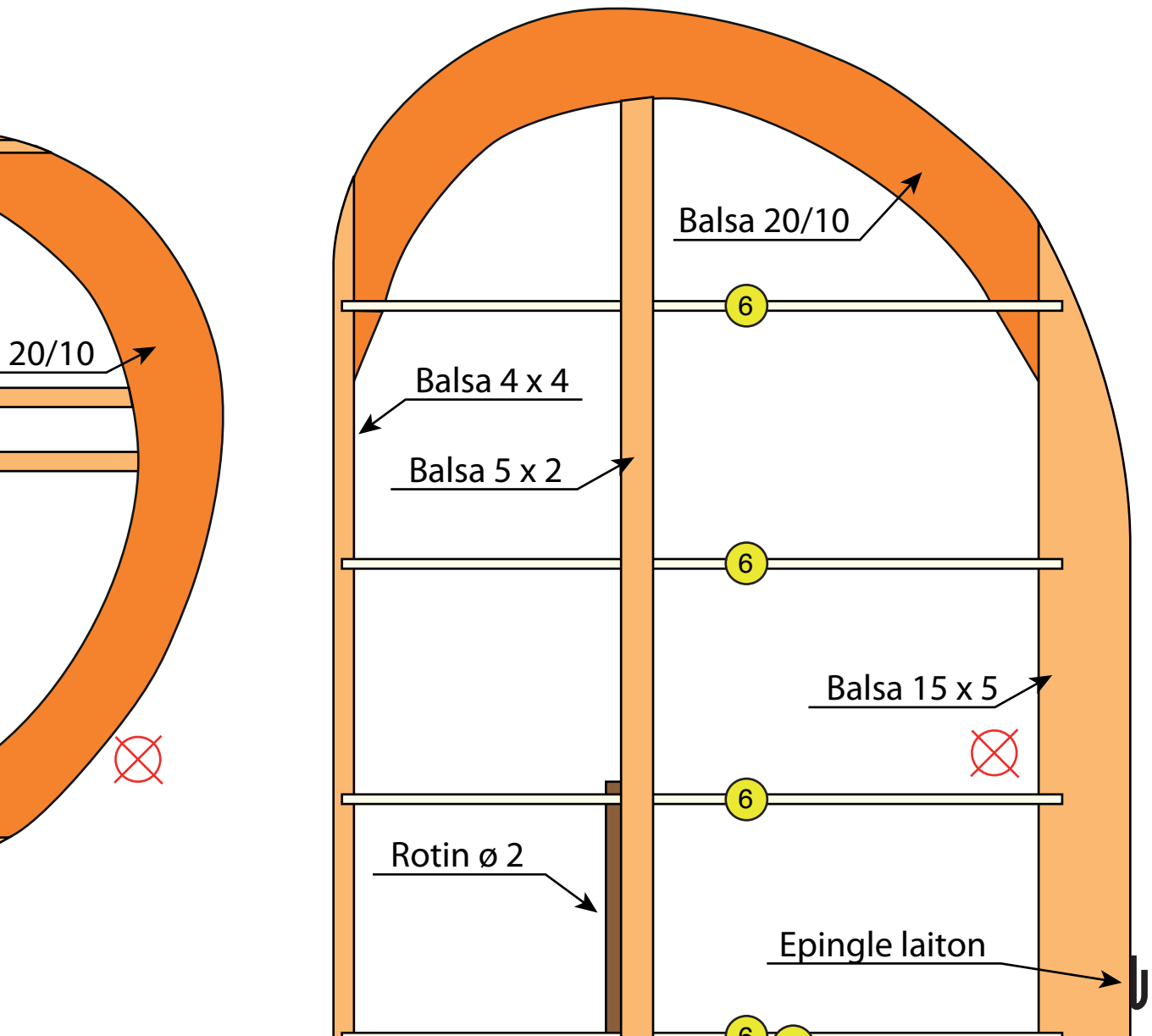
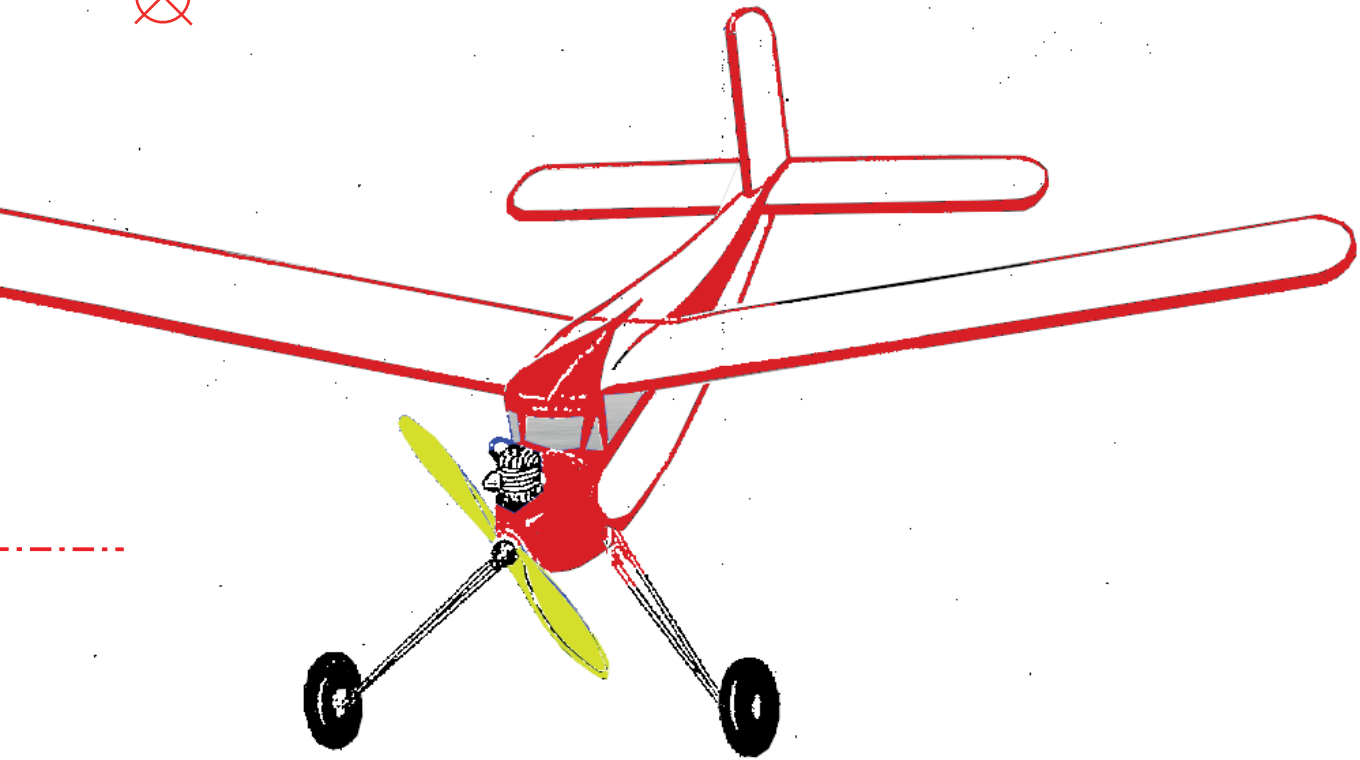
Balsa 5 x 5



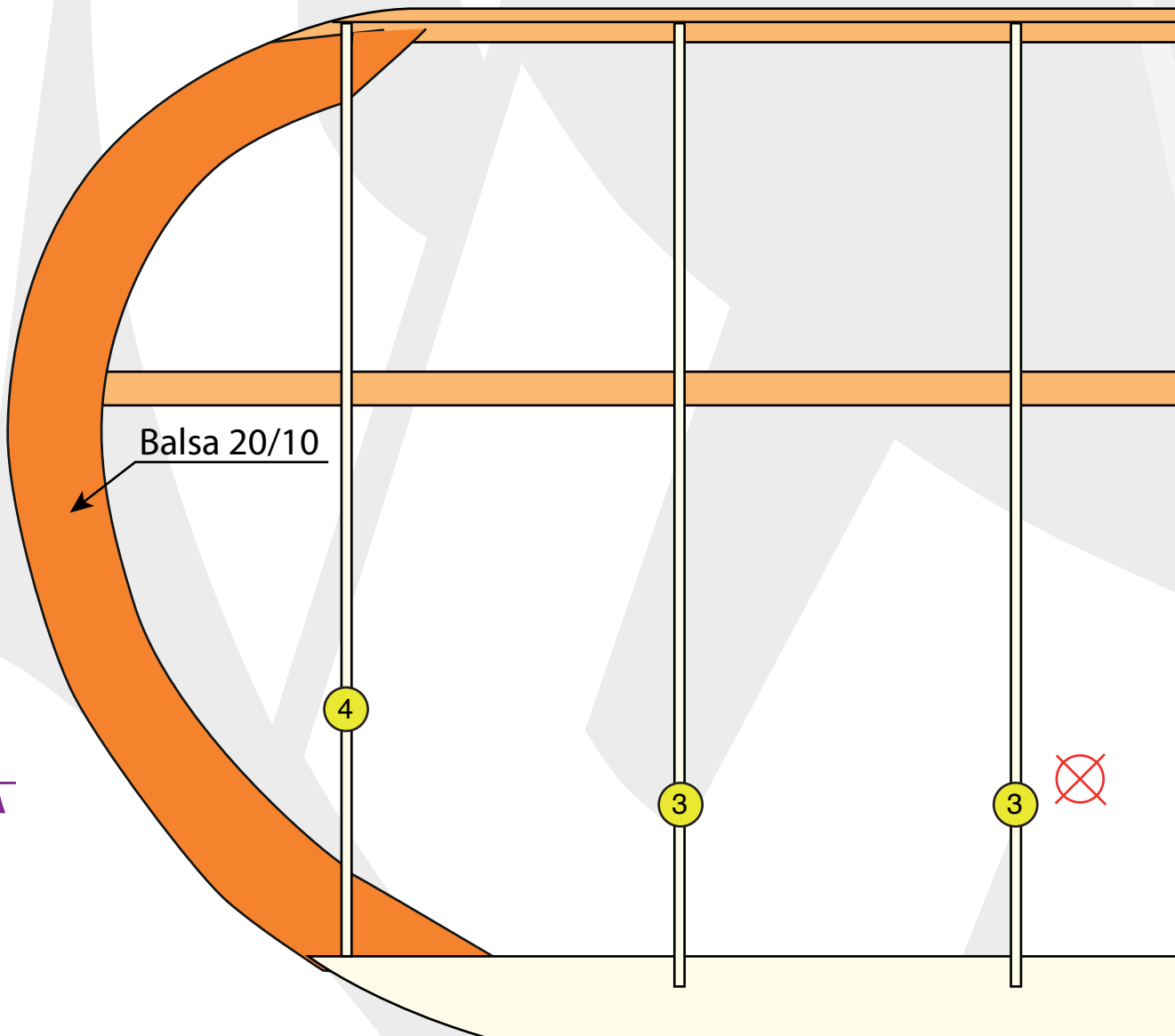
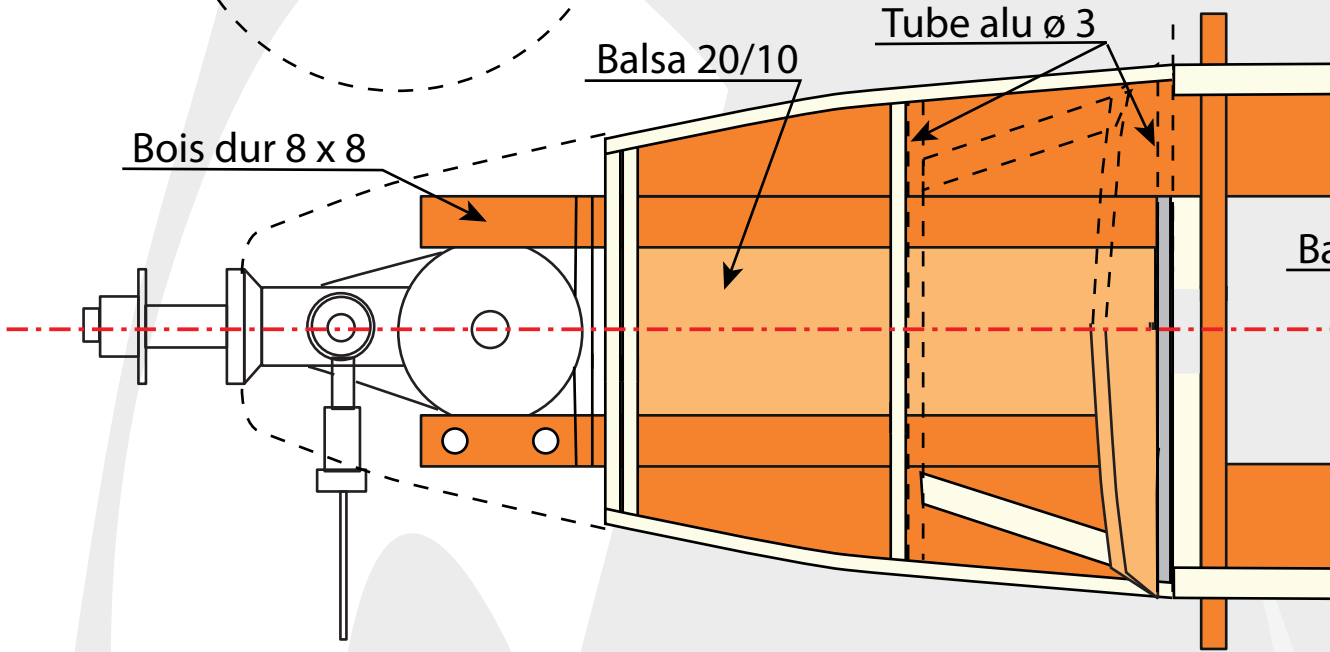
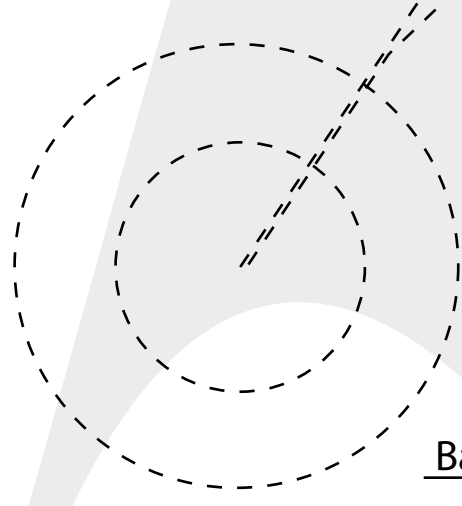
Ce plan est publié sur internet par le CLAP 54.  
Il est mis à disposition sous un contrat  
Creative Commons.



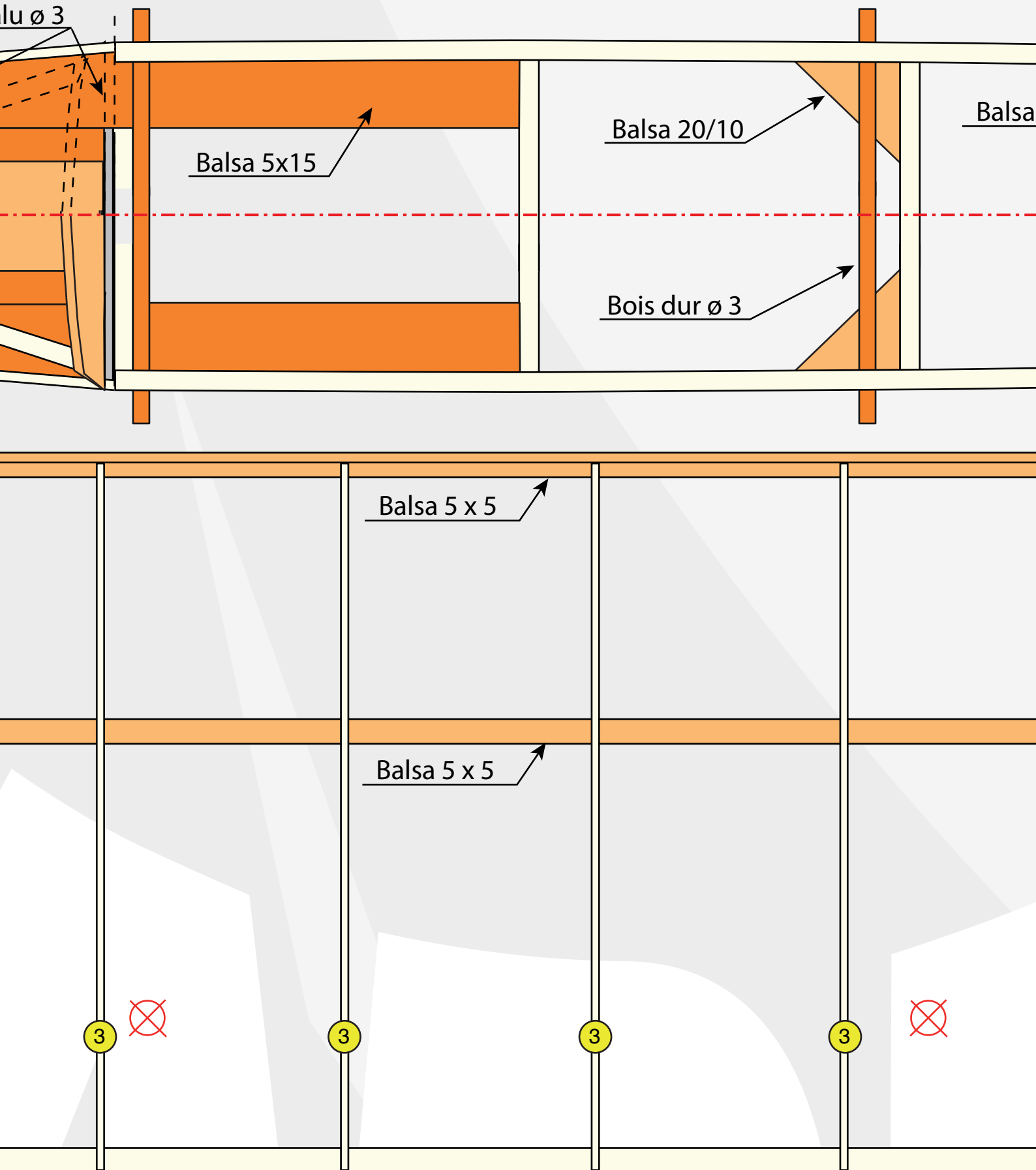




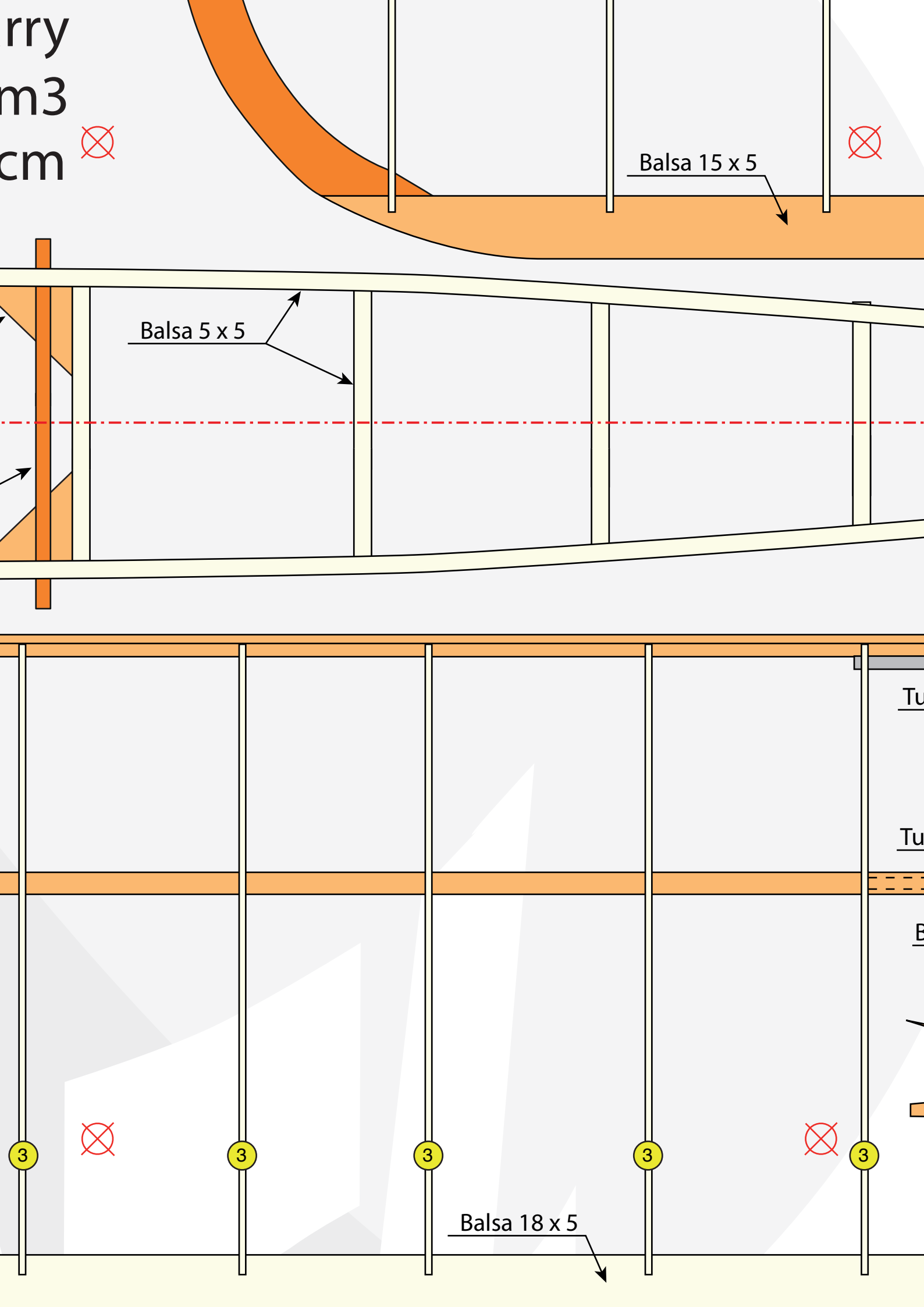
po

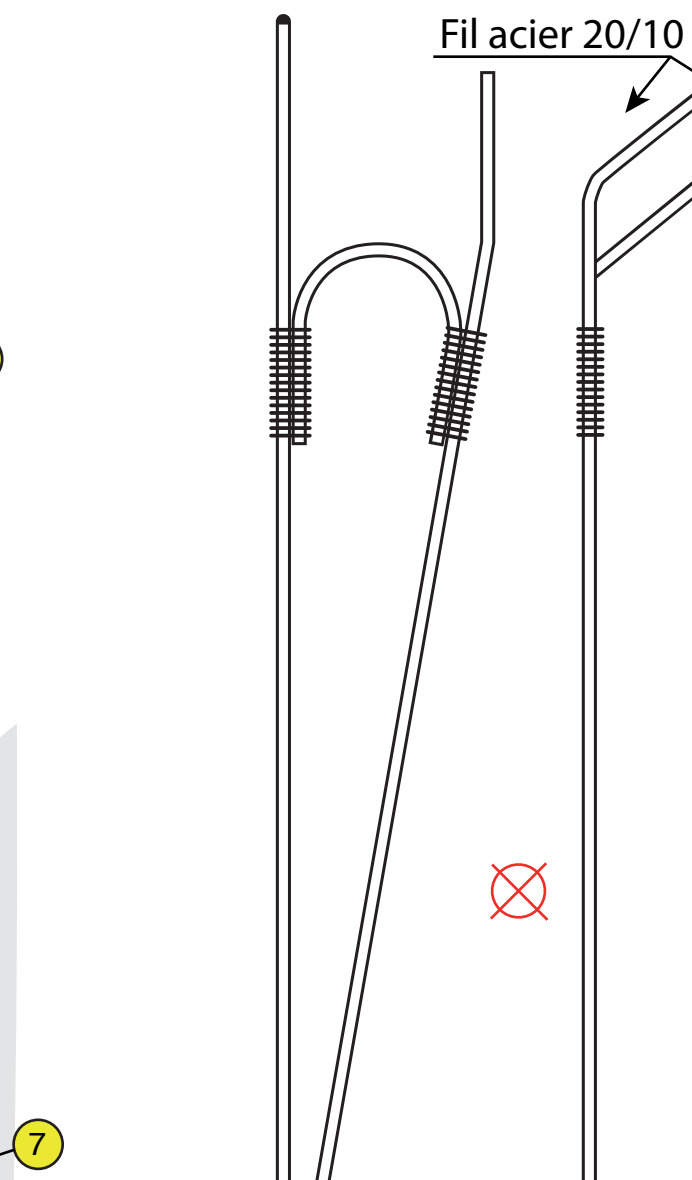
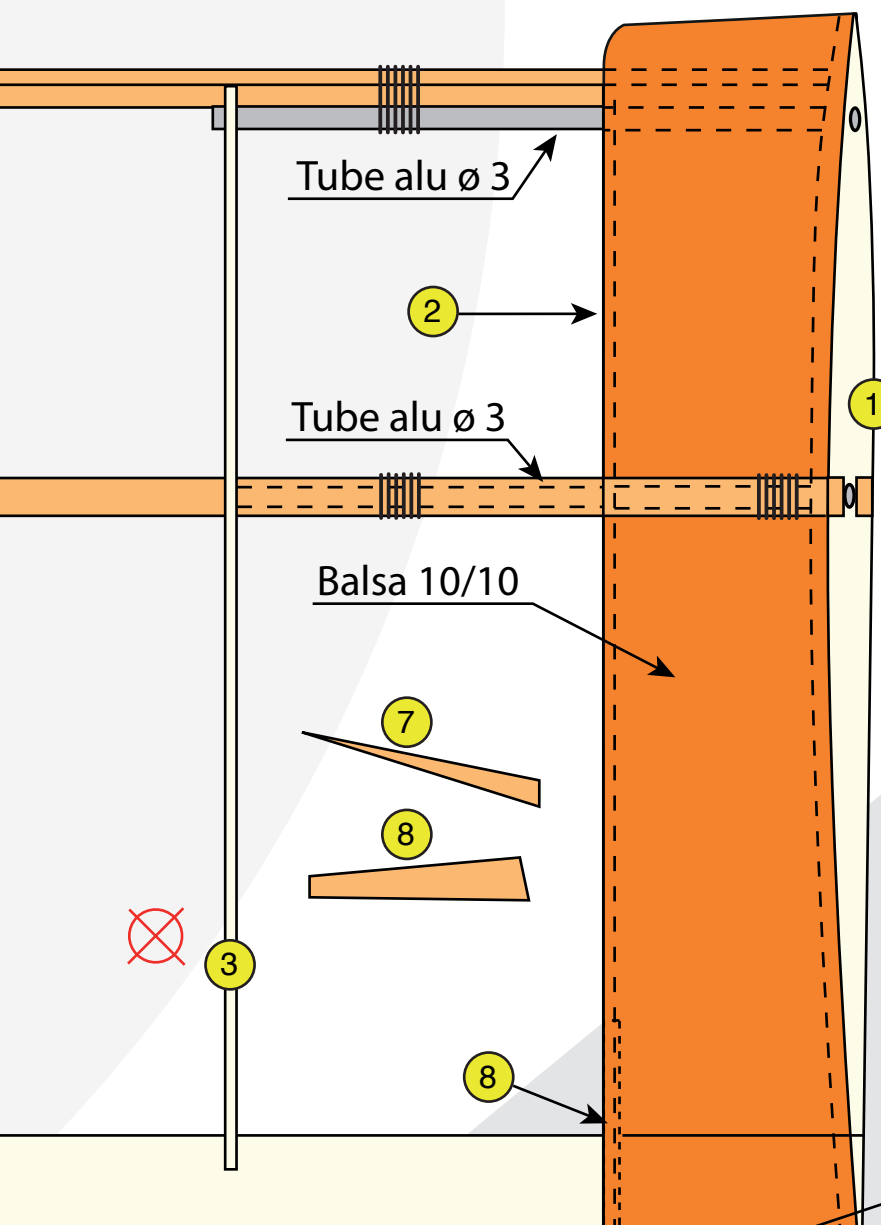
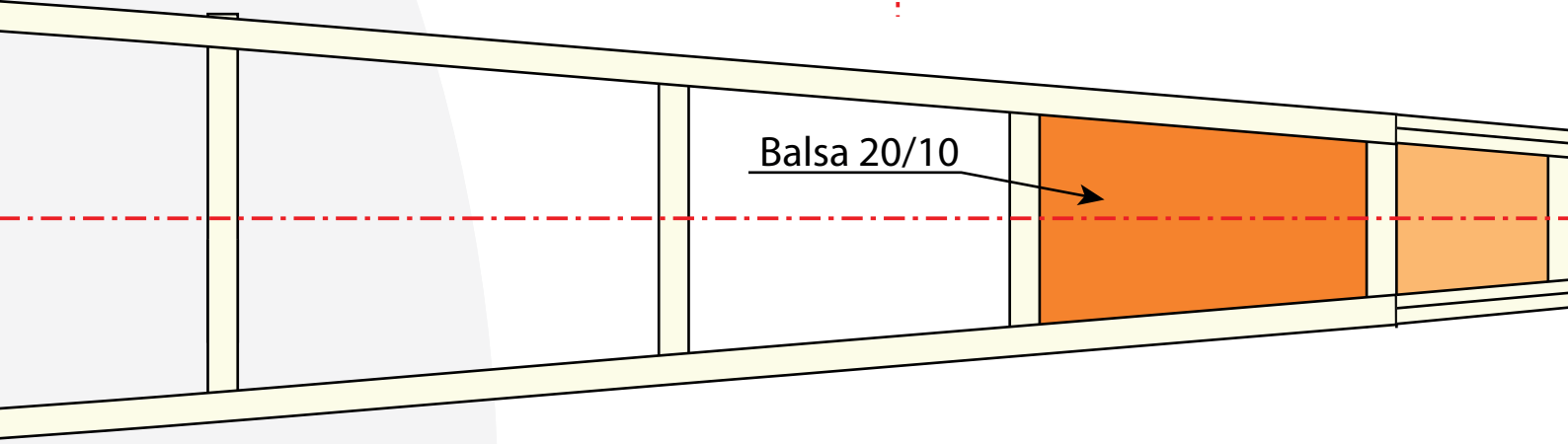
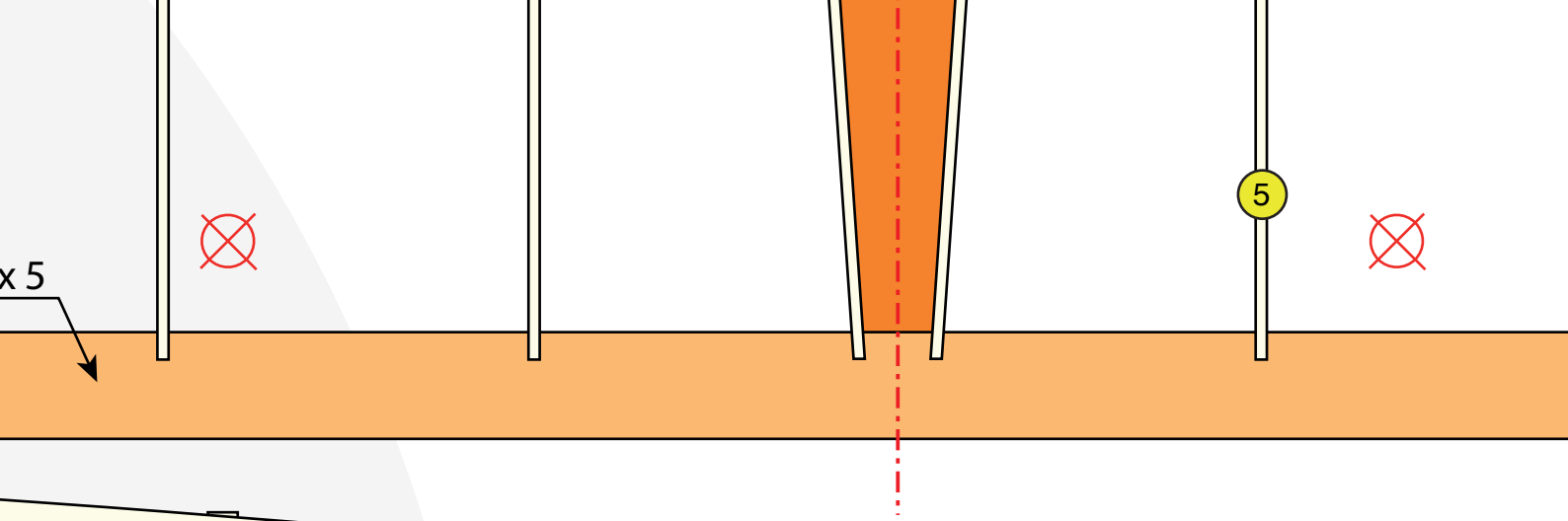


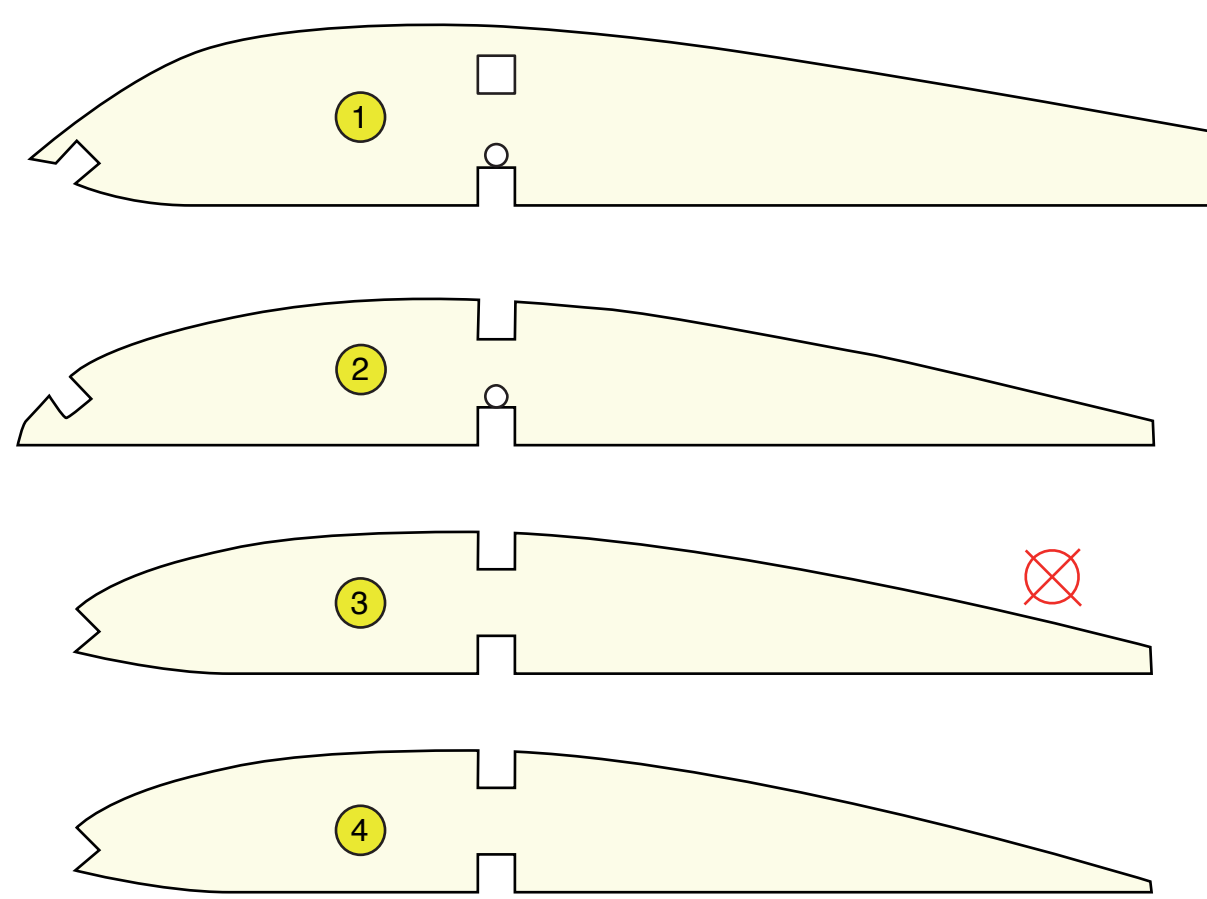
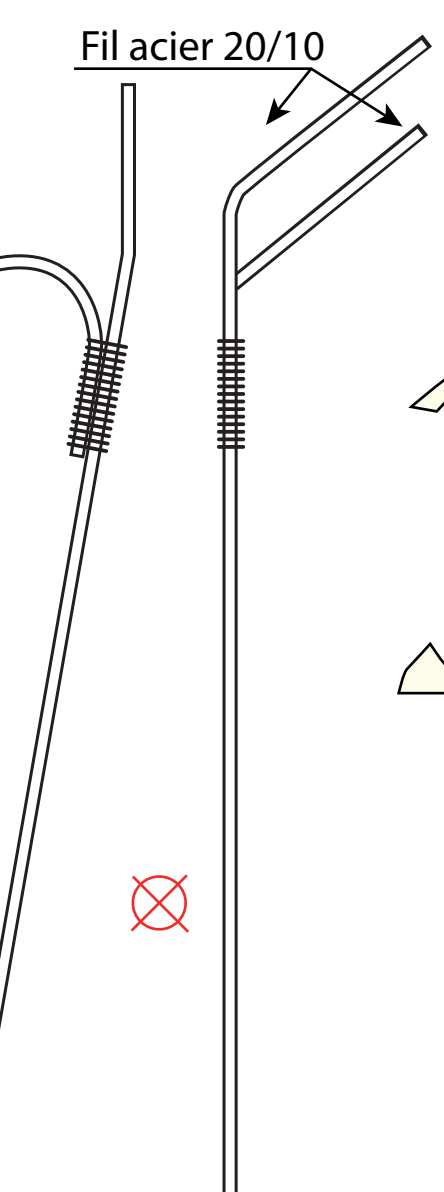
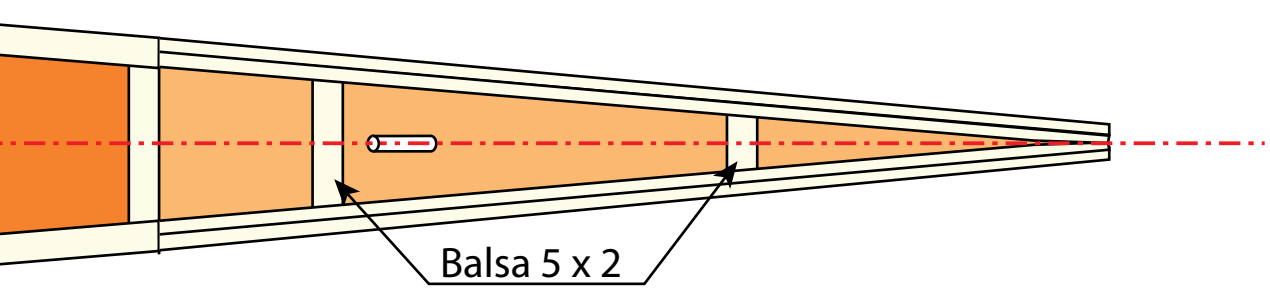
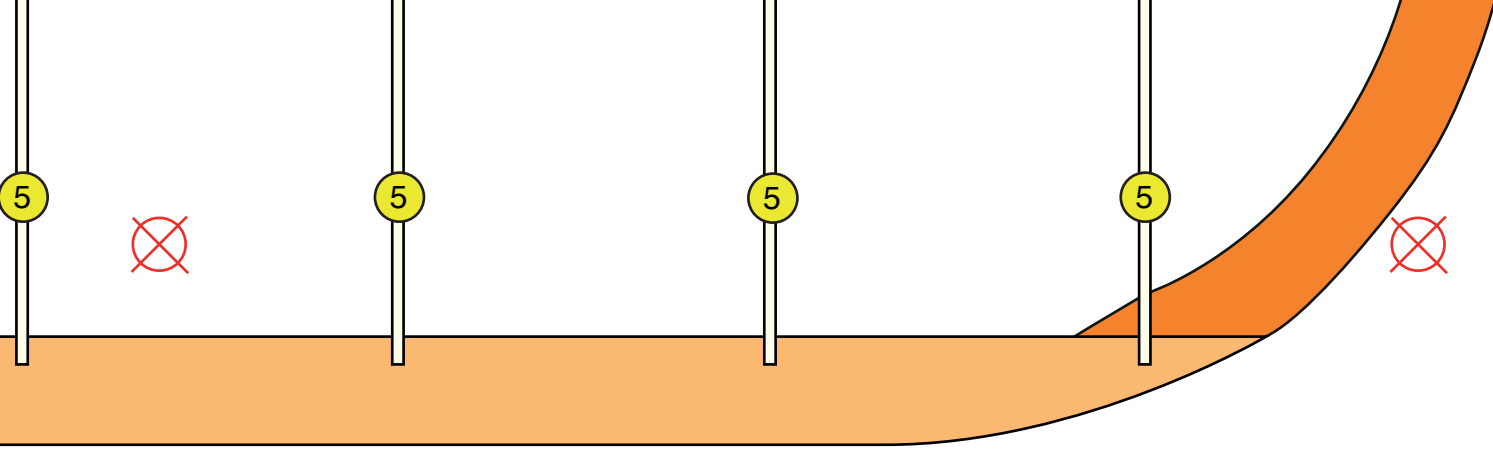
# Motomodèle de M. Jarry pour moteur 0,8 ou 1,5 cm<sup>3</sup> Envergure 114 cm

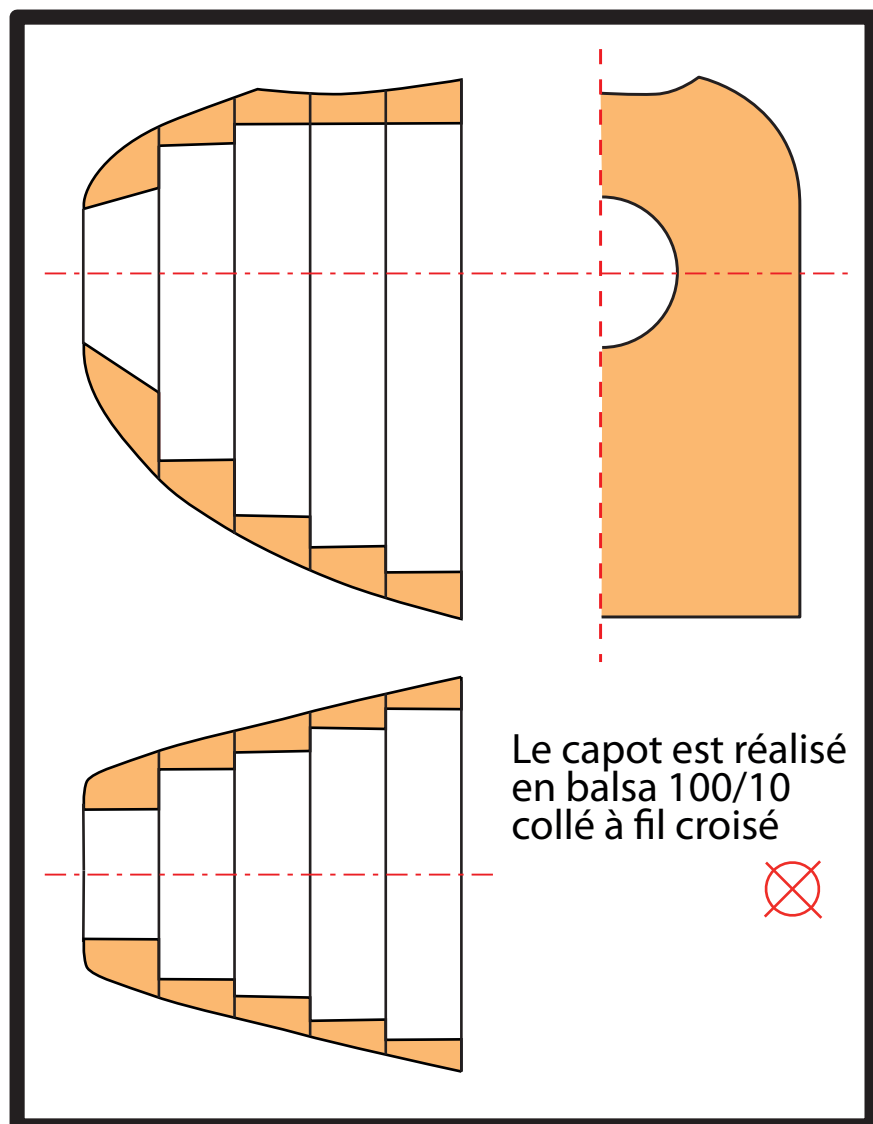
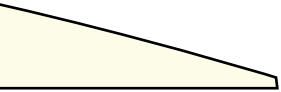
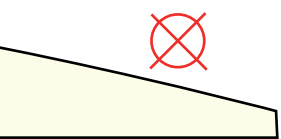
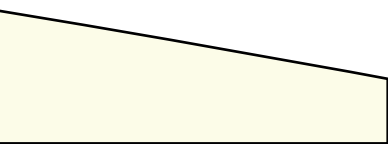
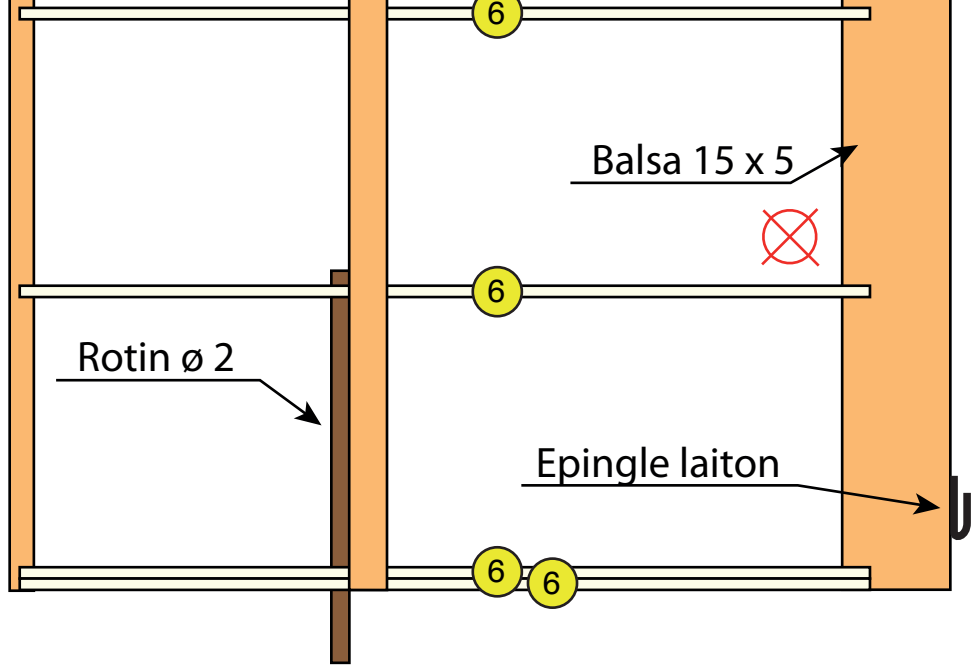
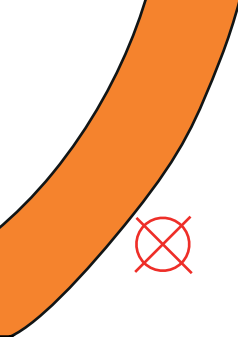














Test d'impression  
100 mm

4

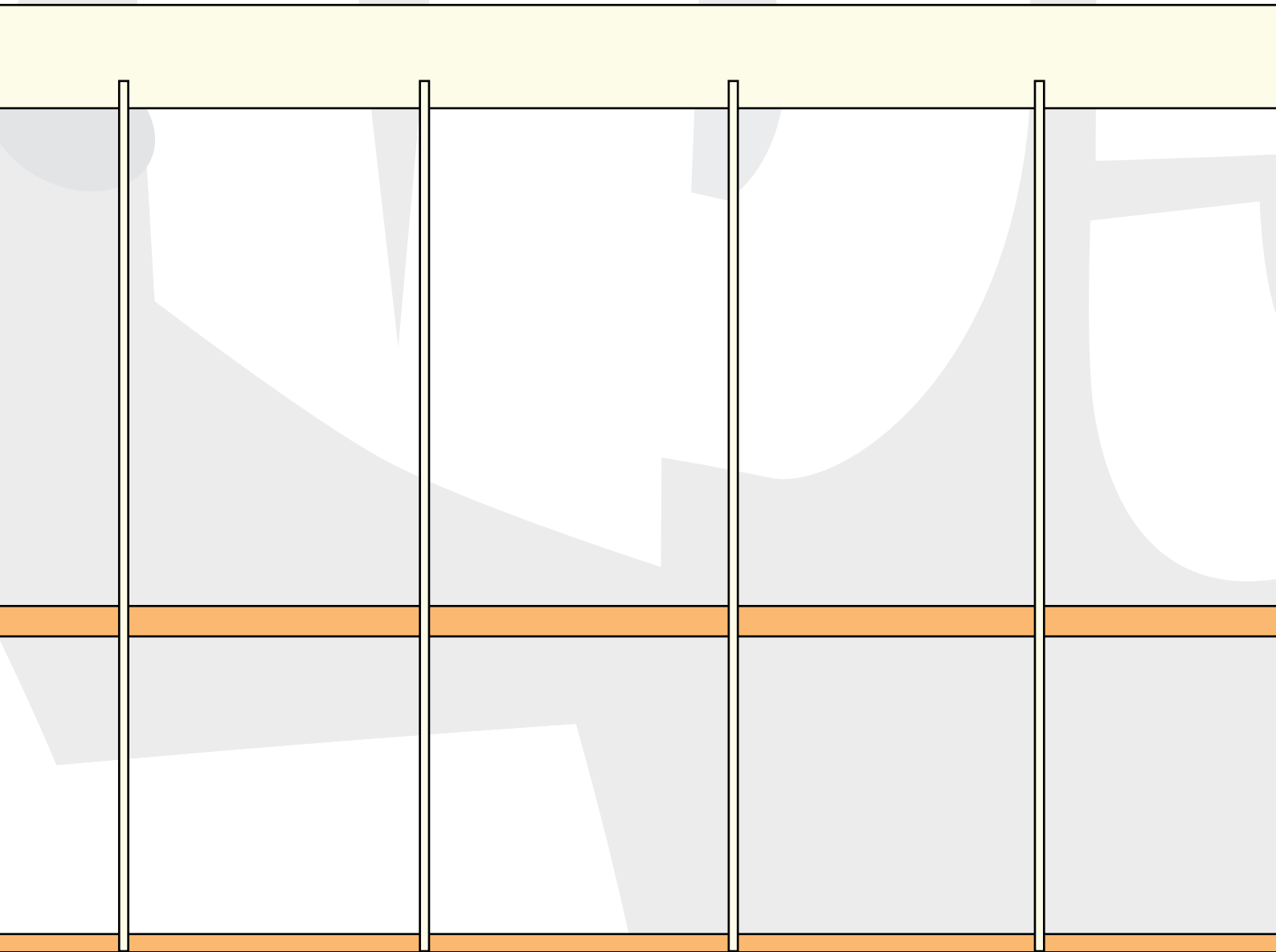
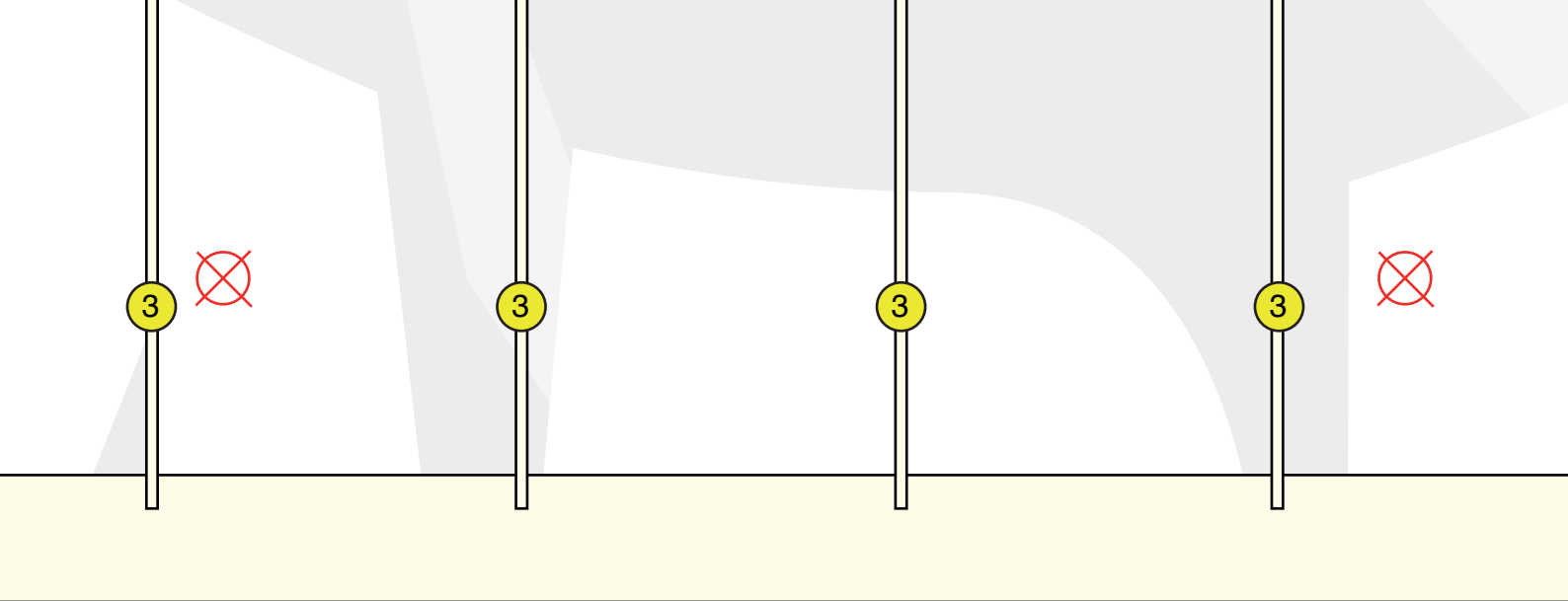
3

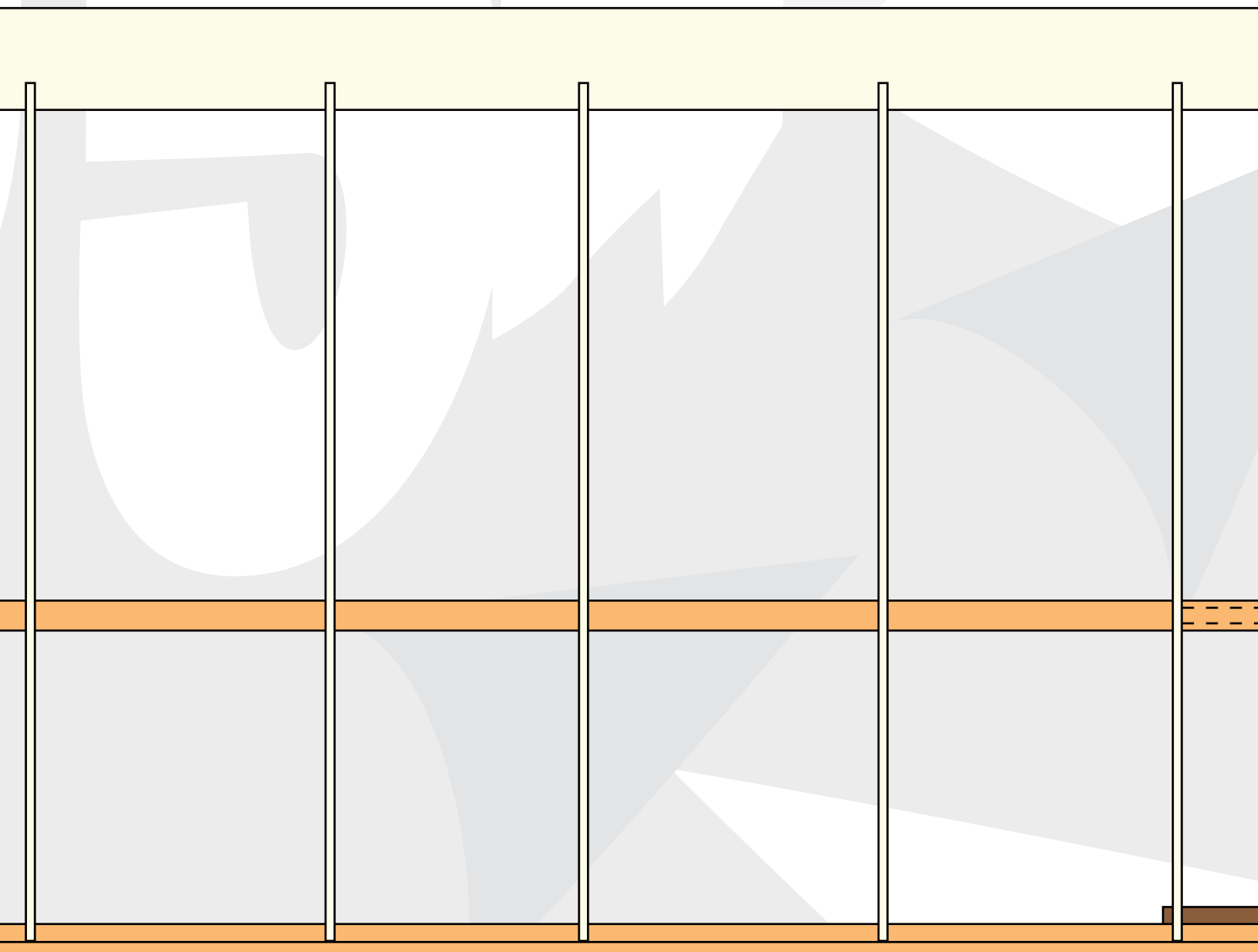
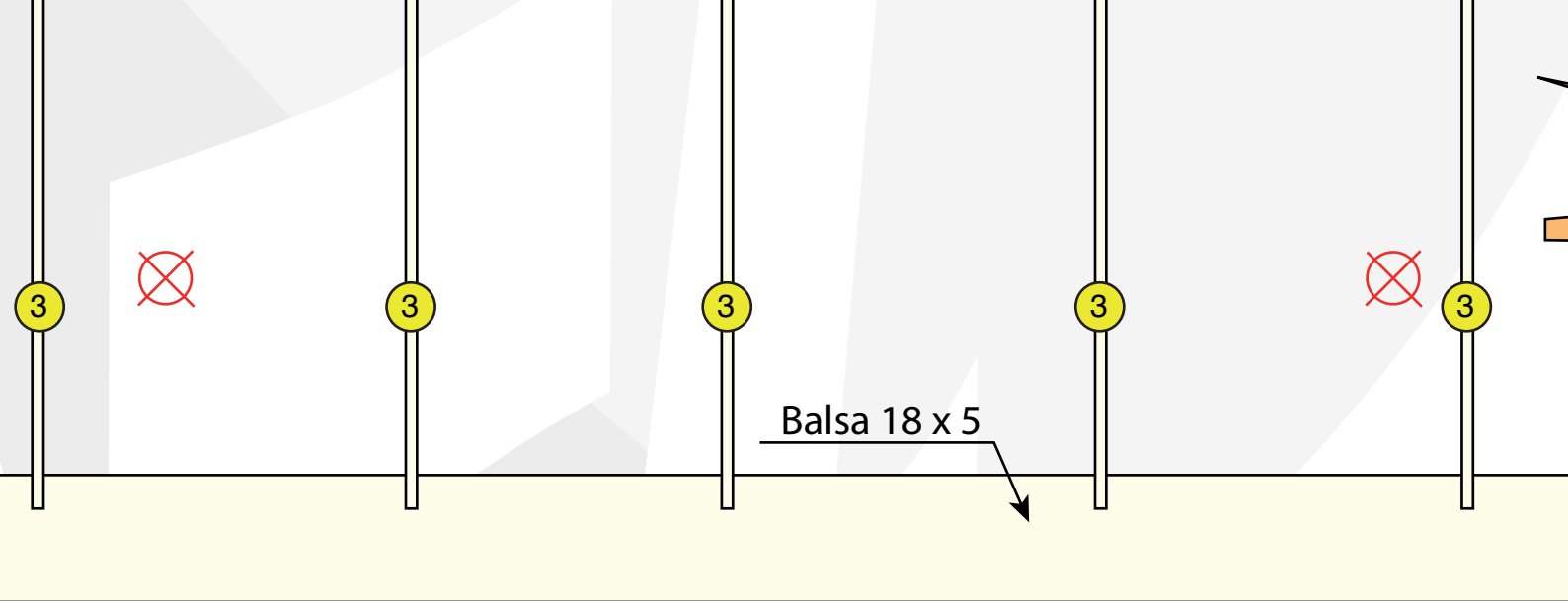
3

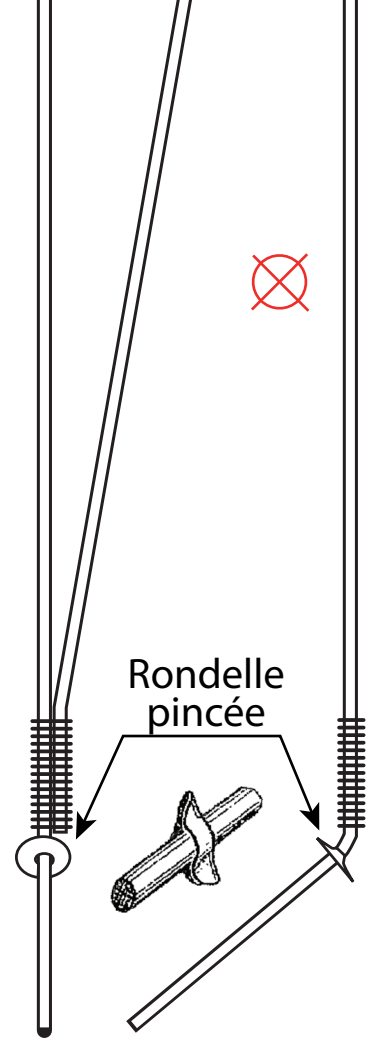
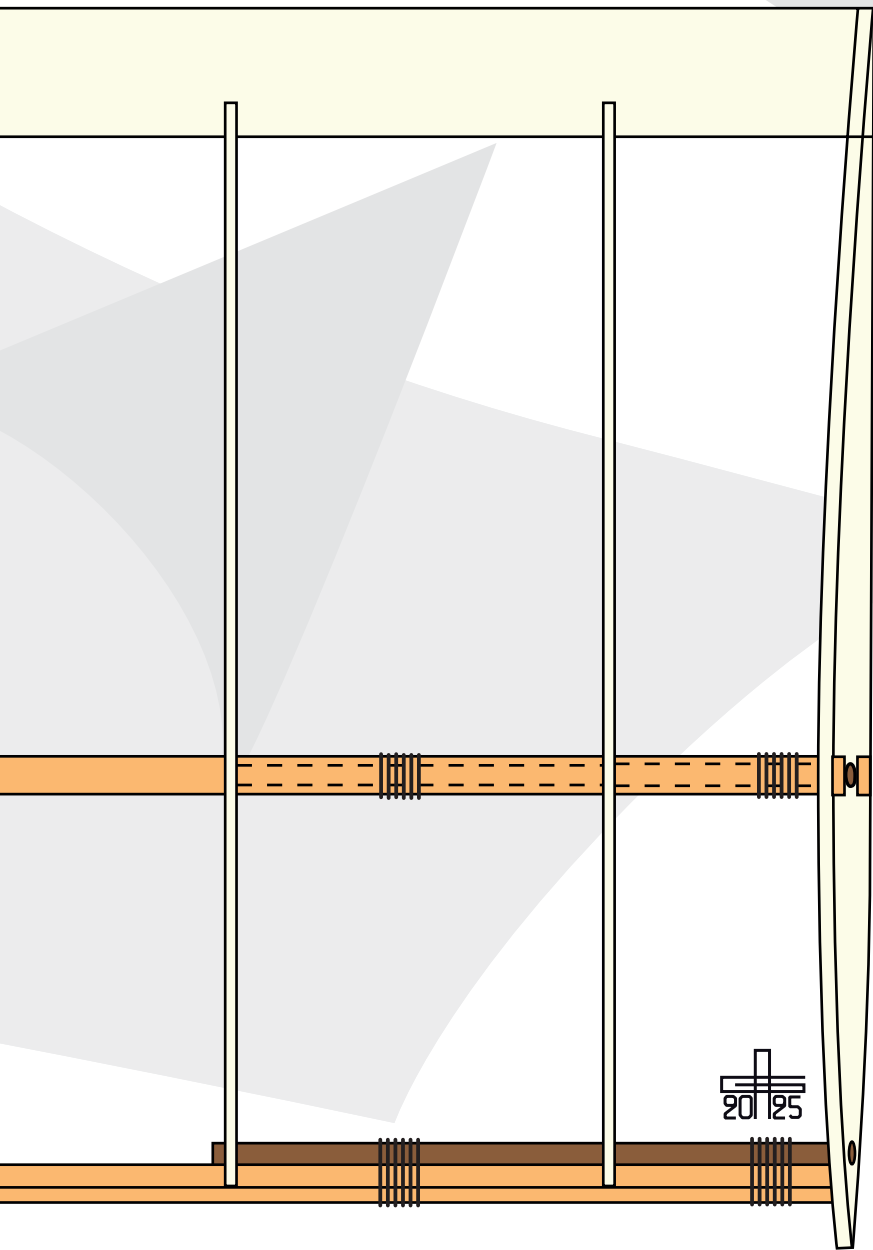
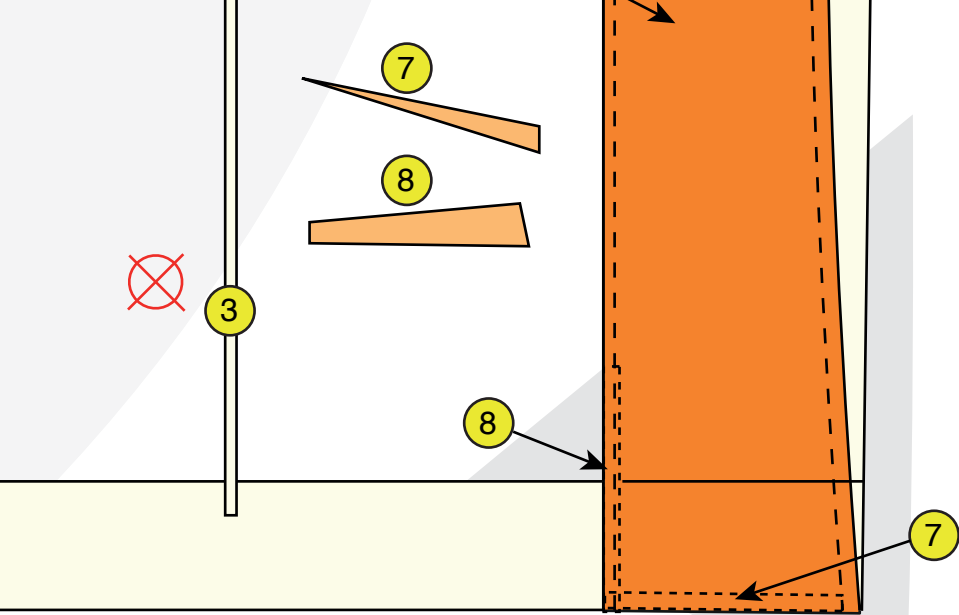


PARIS

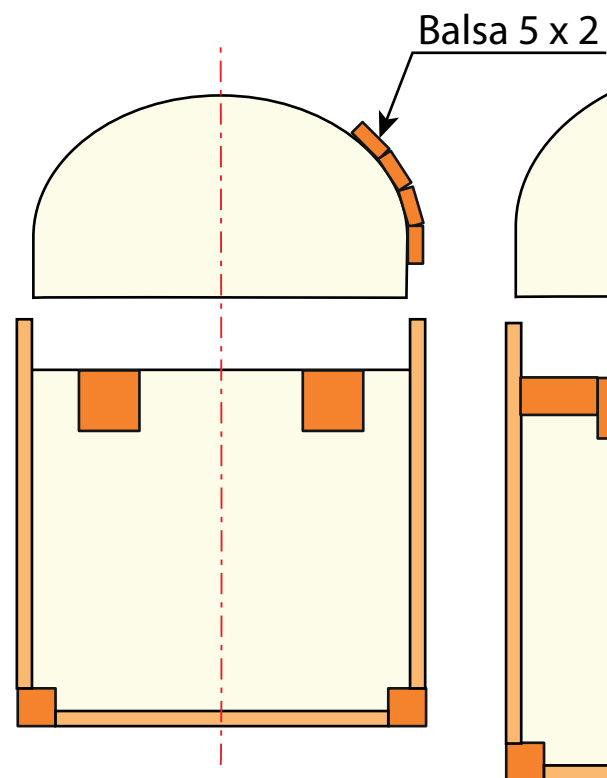




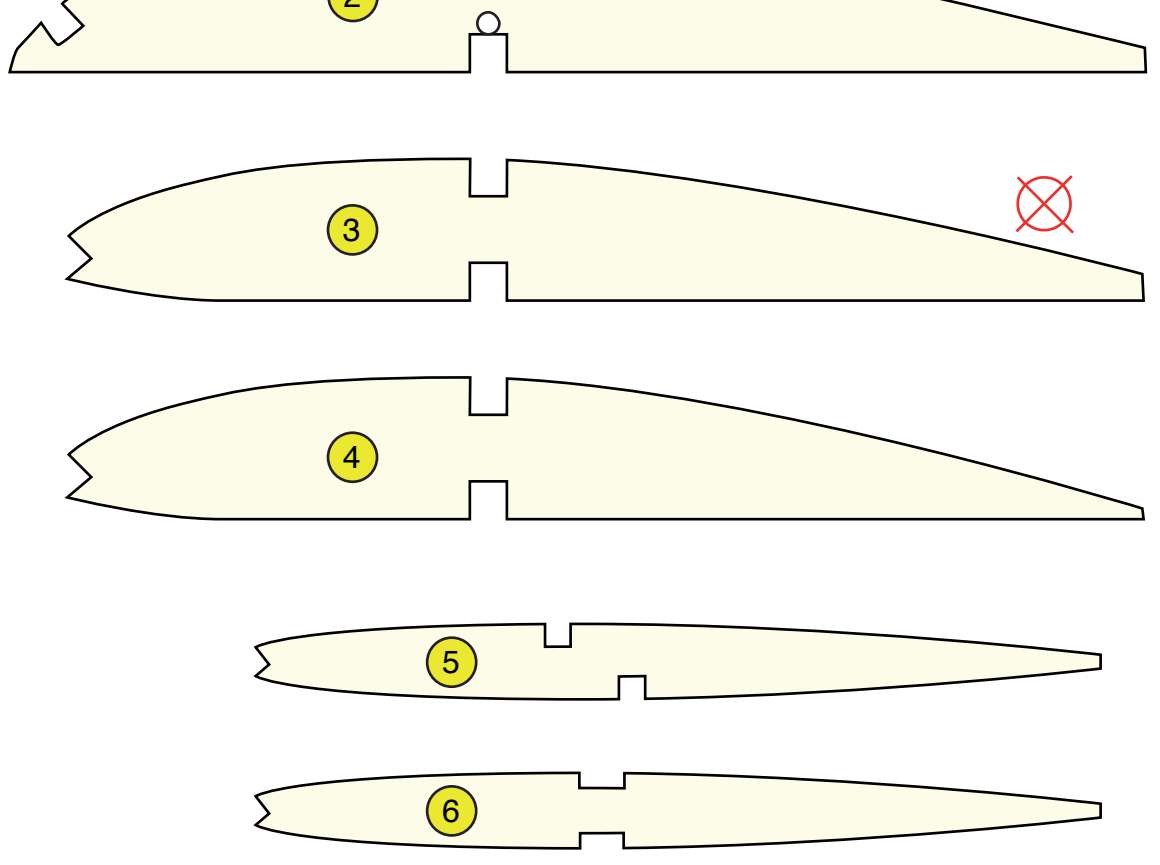




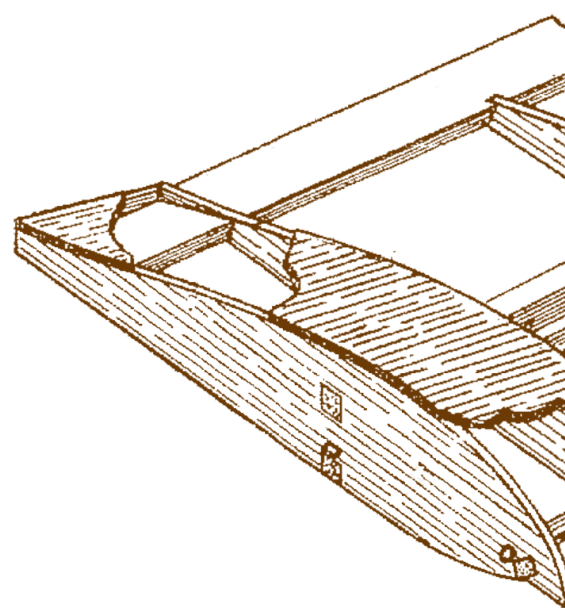
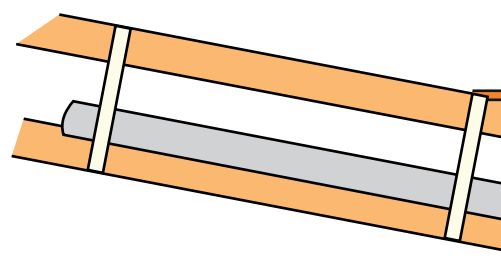
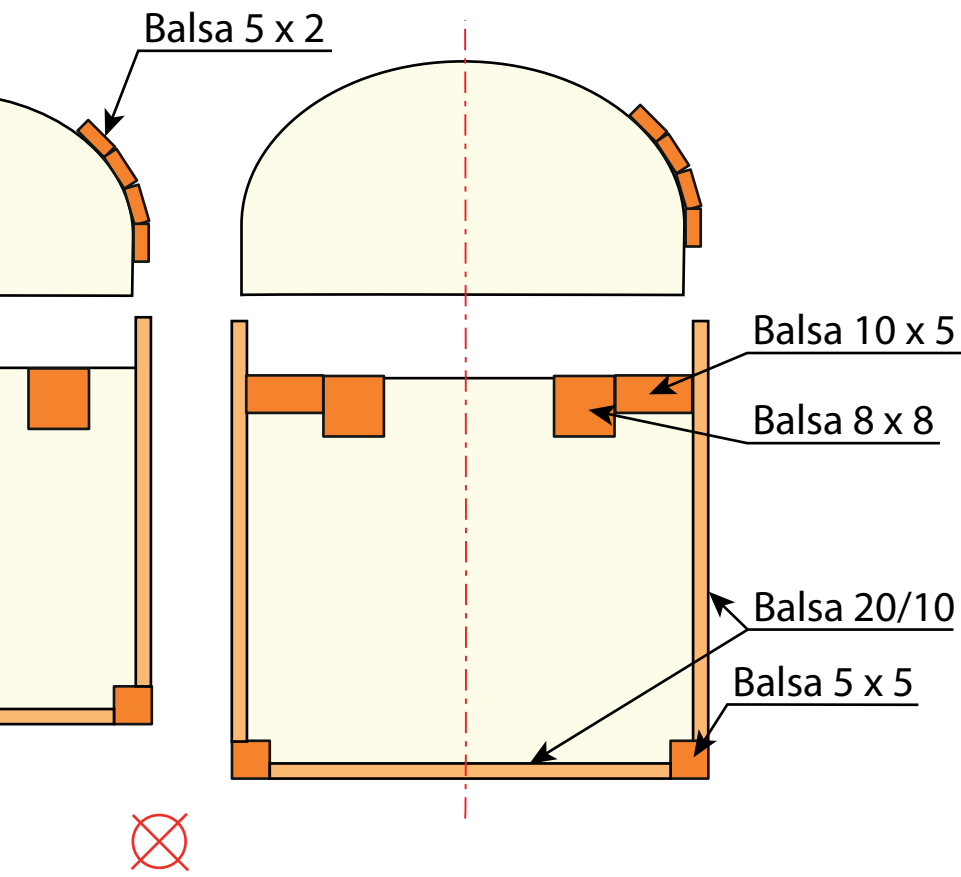
<http://clap54.>



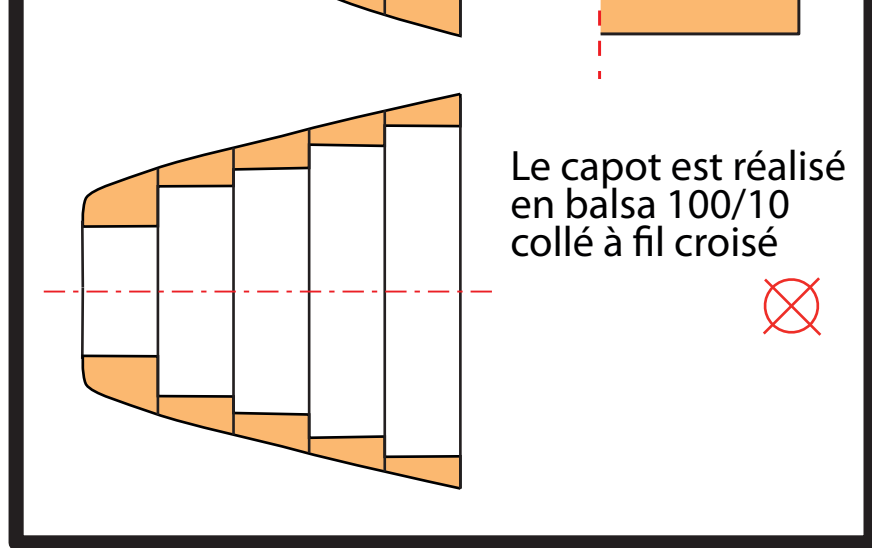
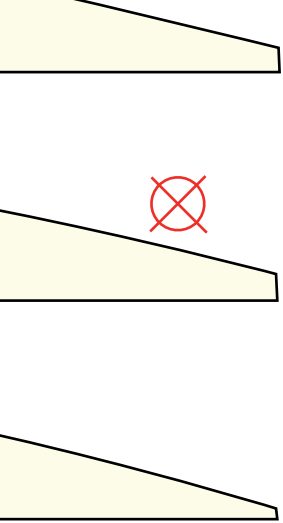




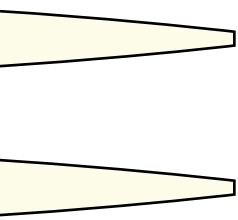
<http://clap54.free.fr>



Sur ordinateur



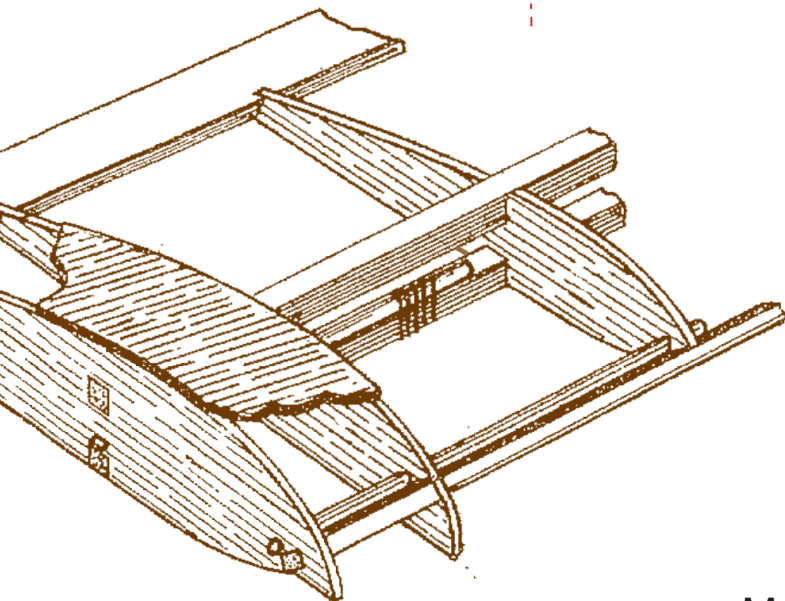
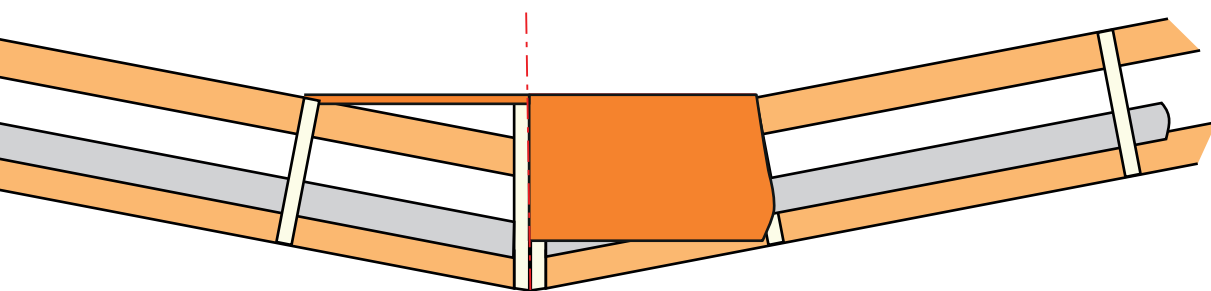
Le capot est réalisé  
en balsa 100/10  
collé à fil croisé



## Hélice

18 x 10 pour 0,8 cm<sup>3</sup>

22 x 10 pour 1,5 cm<sup>3</sup>



Motomodèle de M. Jarry - 1958

Dessin de Maurice Dubreuil

Sur ordinateur le 28 et sur internet le 29 janvier 2025 - Alain GLESS

