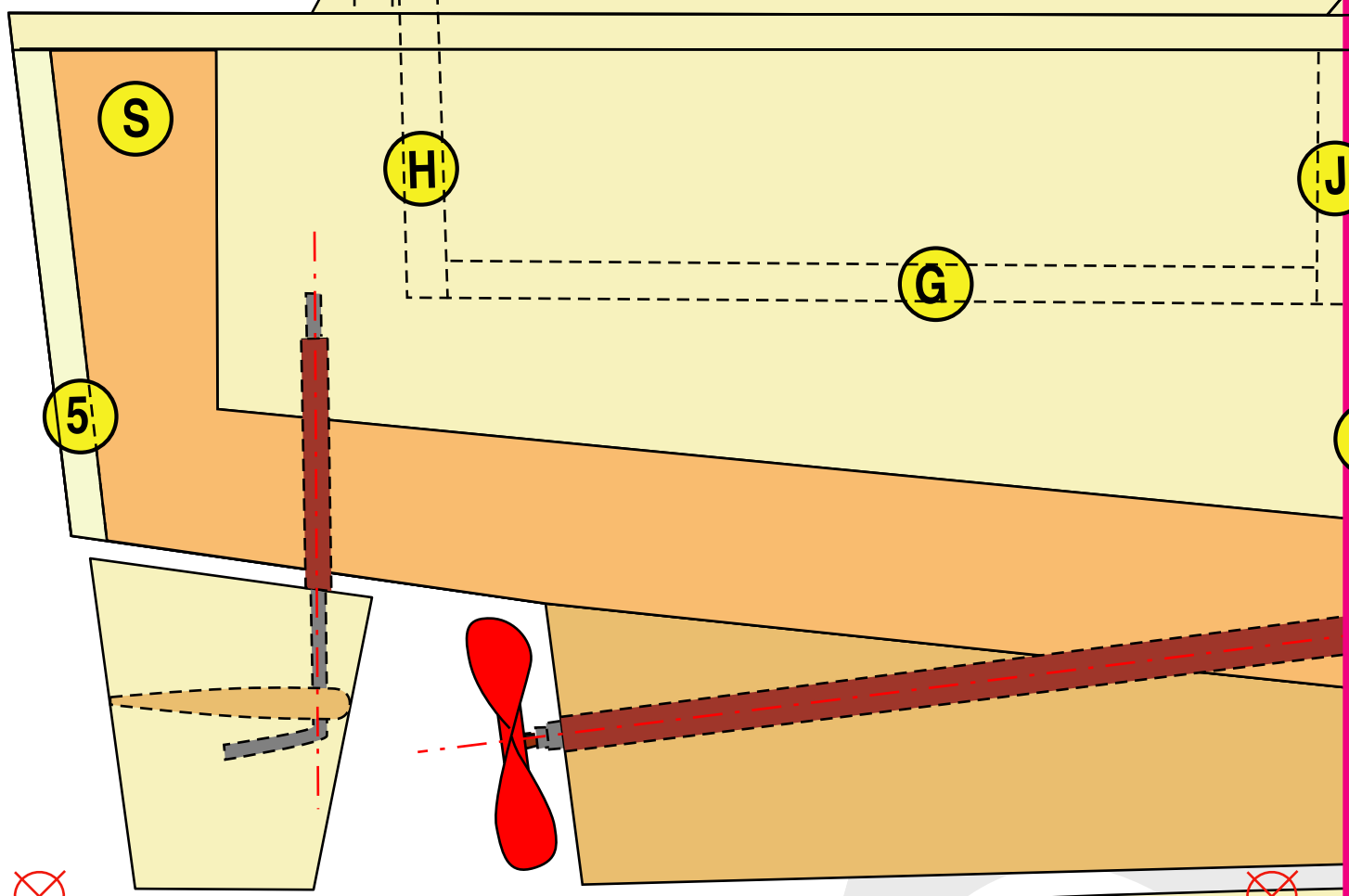


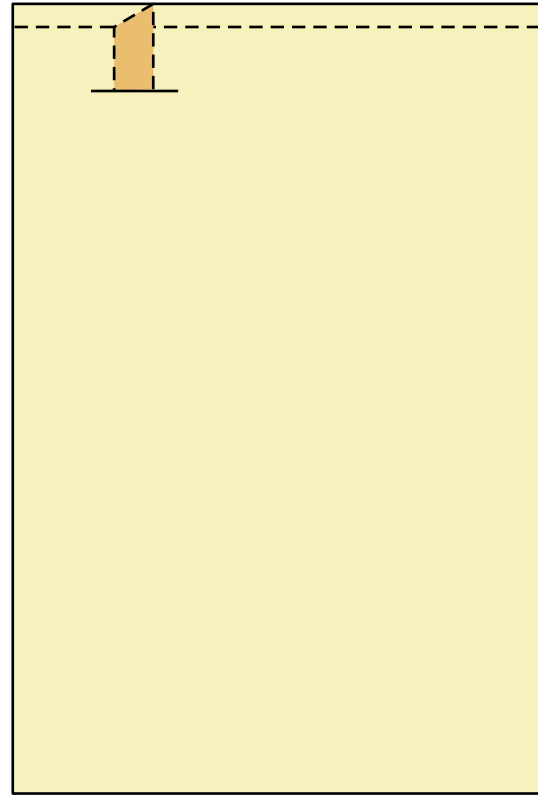
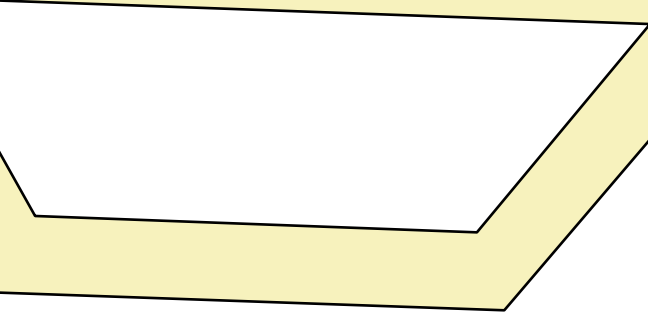
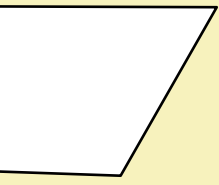
9





5 mm

2x **K**



**D2**

**7**

**8**

**P**

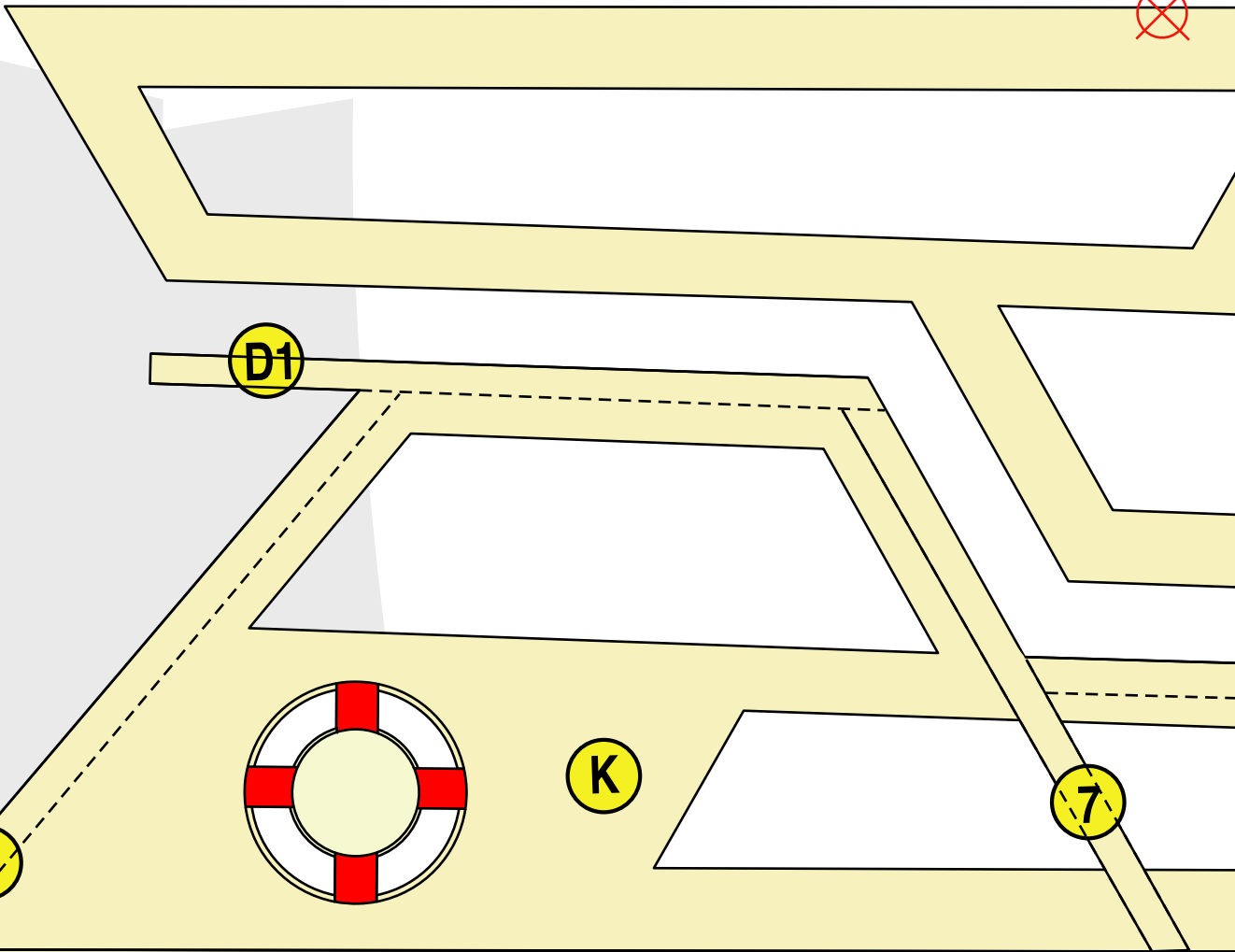
**V65**

**3**

**2**

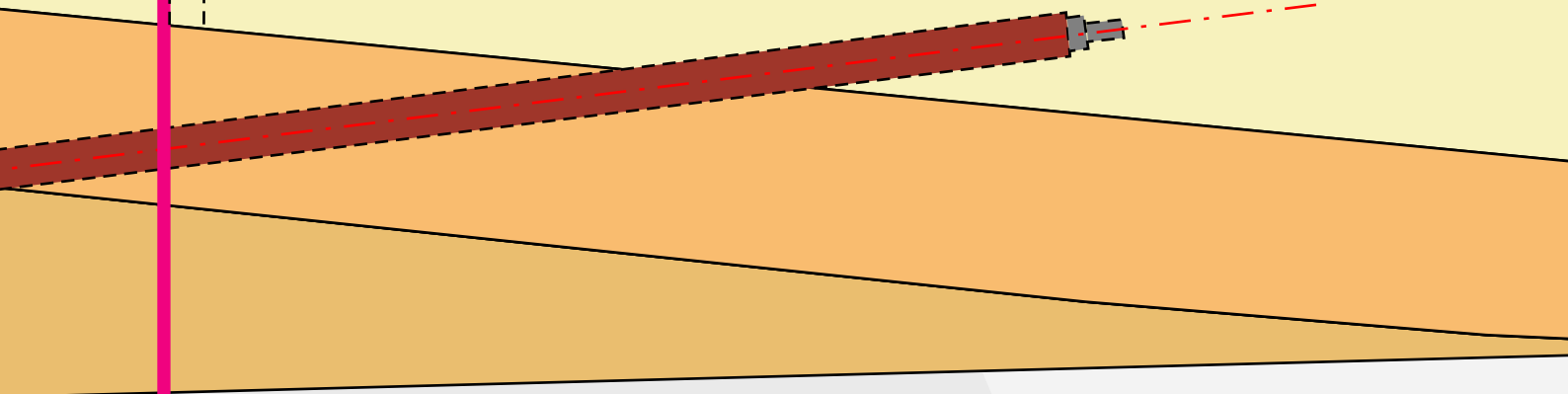
**S** 10 mm

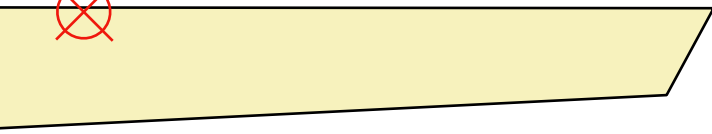




J

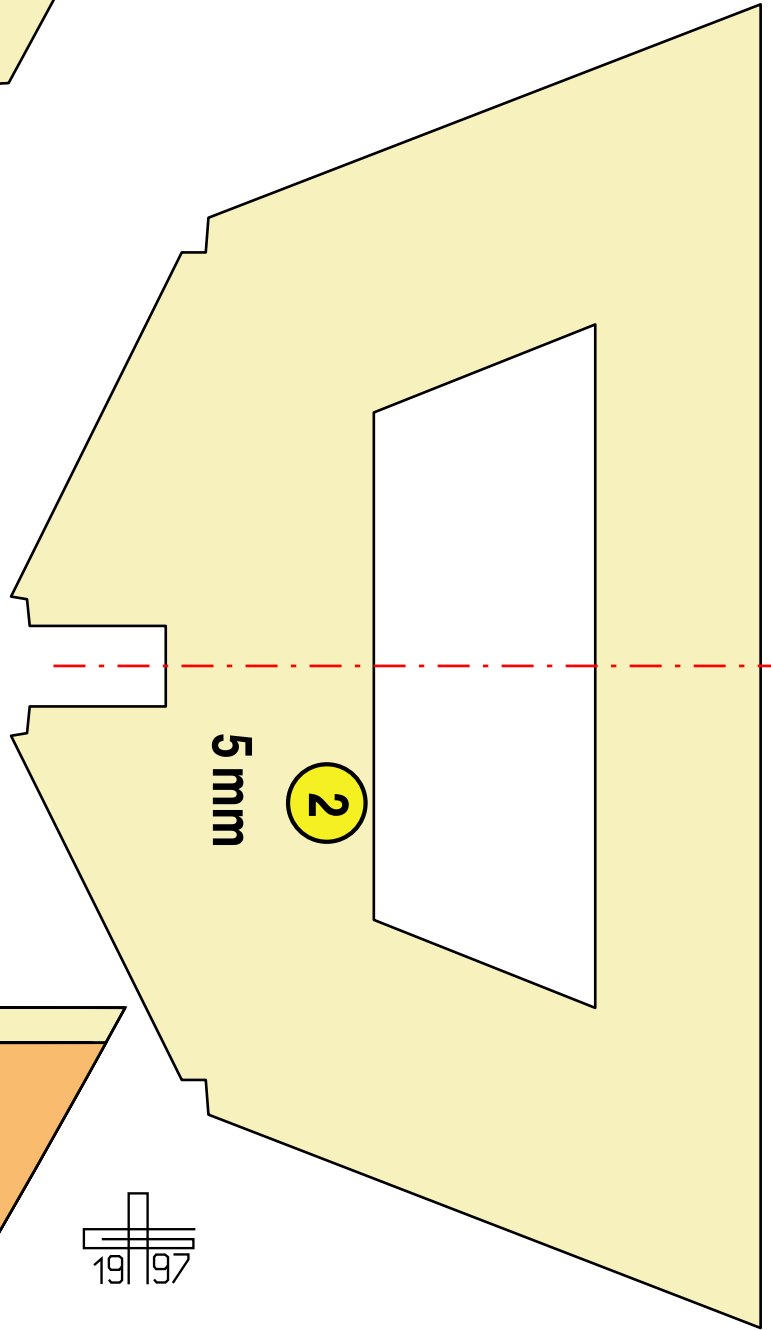
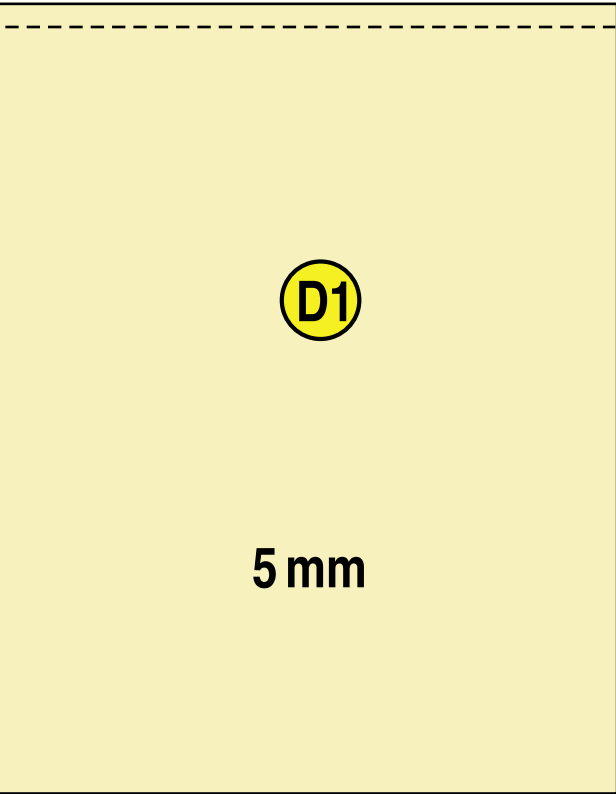
4





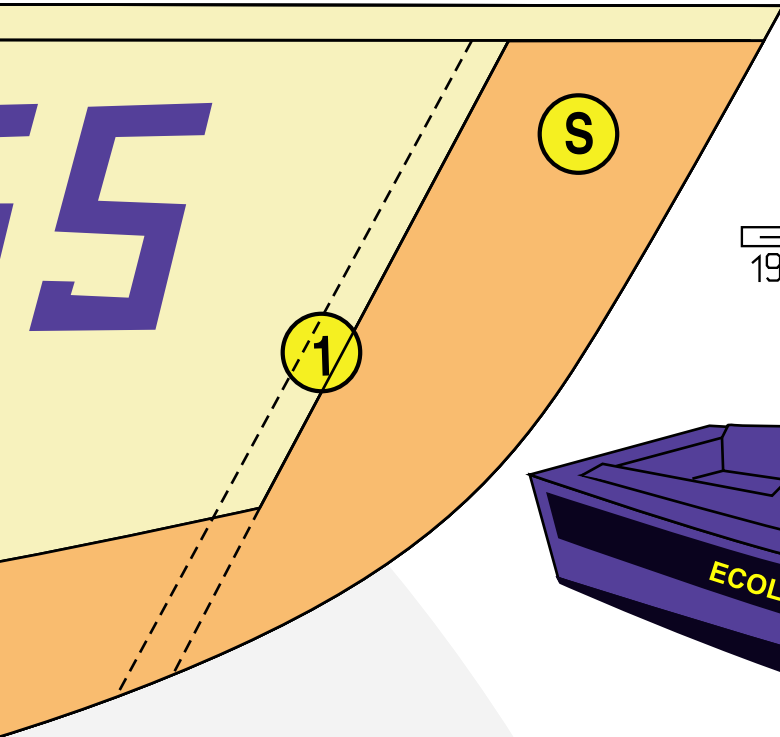
D1

5 mm



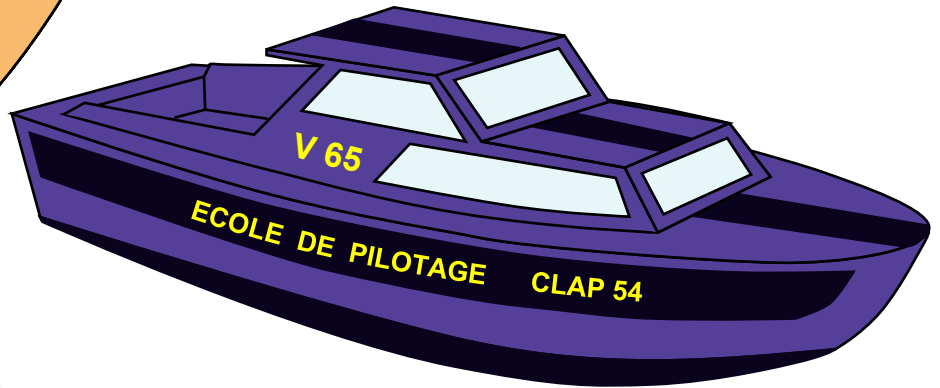
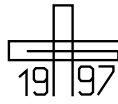
5 mm

2



S

1





6 5 mm

S

5



X x2 10 mm





**P** 5 mm

**1**  
5 mm

**2**

Sur ordinateur  
Alain GLESS  
CLAP 54  
1997

**3**

**0** x 2

1,5 mm



5 mm

7

**V65**

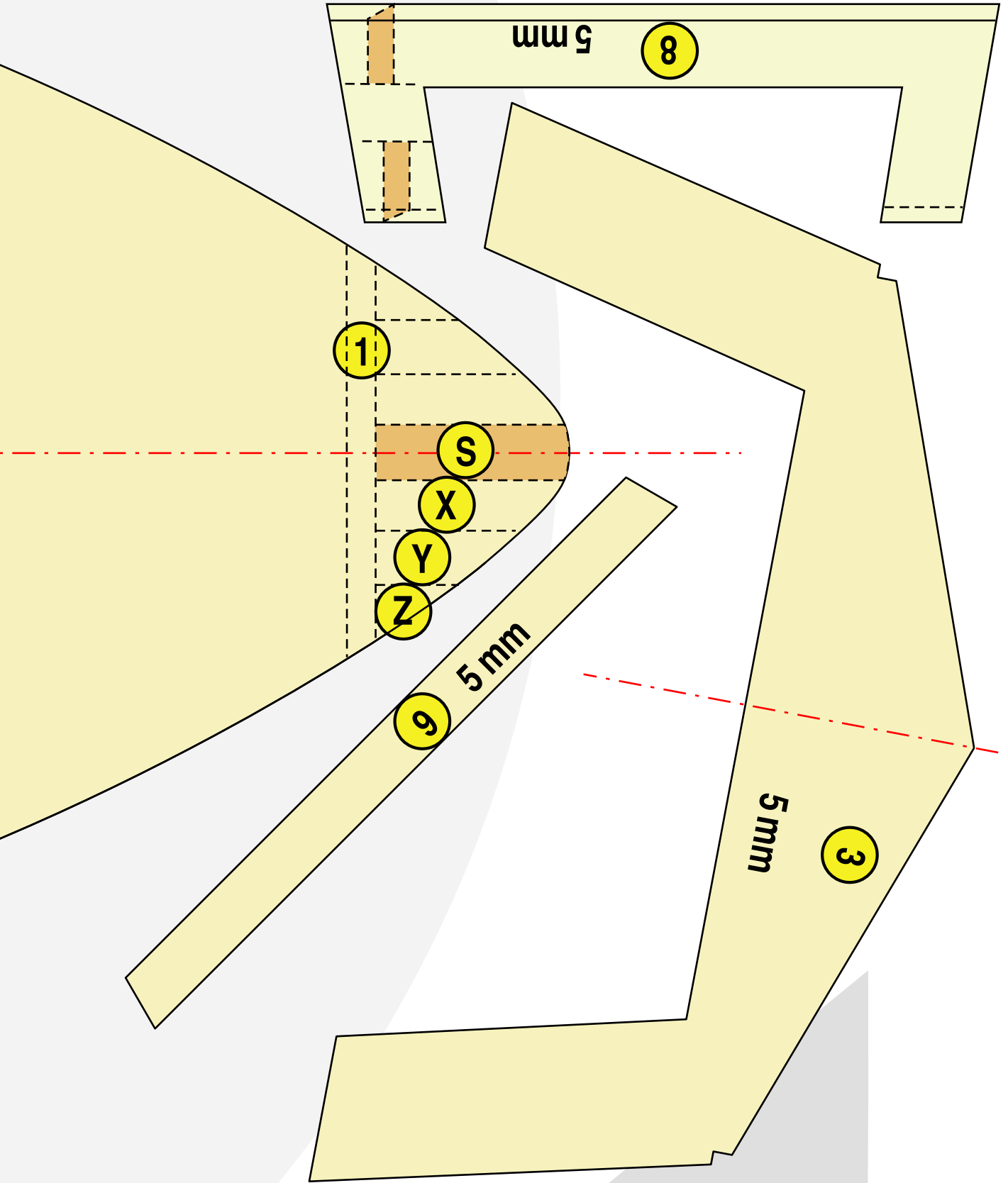
**VELETTE DE DÉBUT  
RADIOCOMMANDÉE**

**Robert GRANSEIGNE  
CLAP 86  
1979**

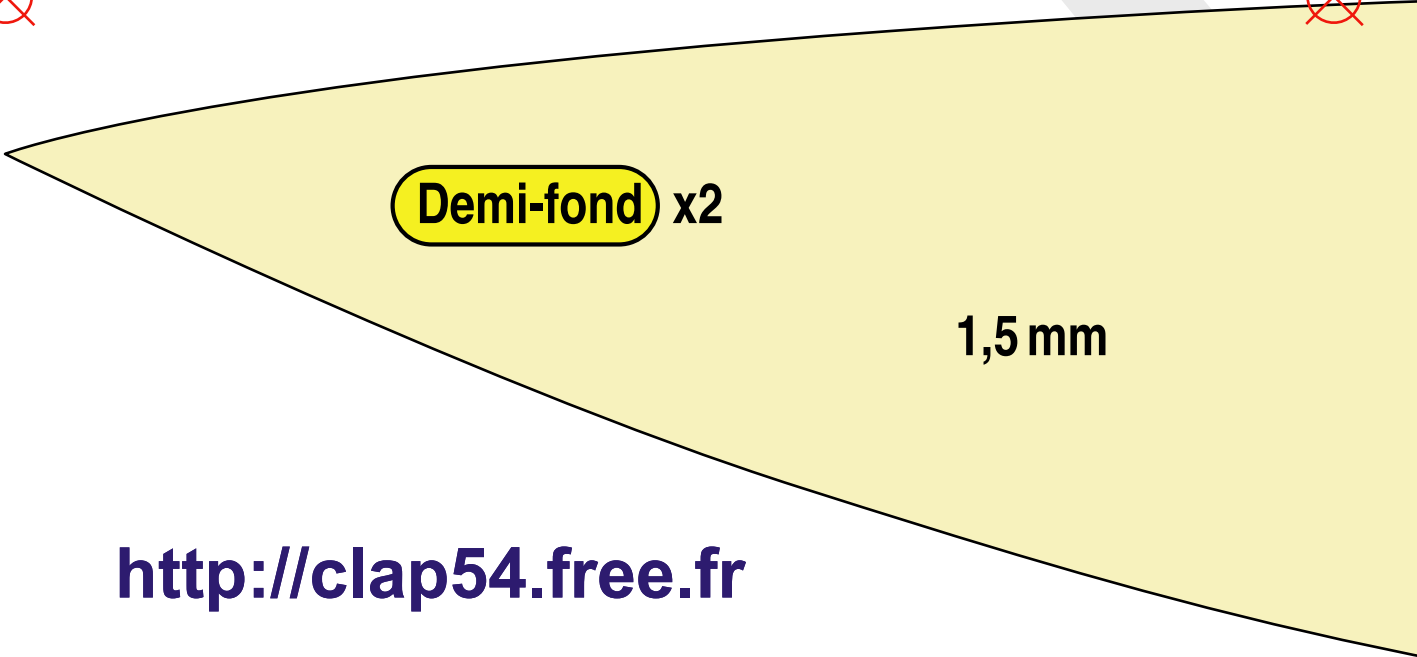
4

**Y** x2 10 mm

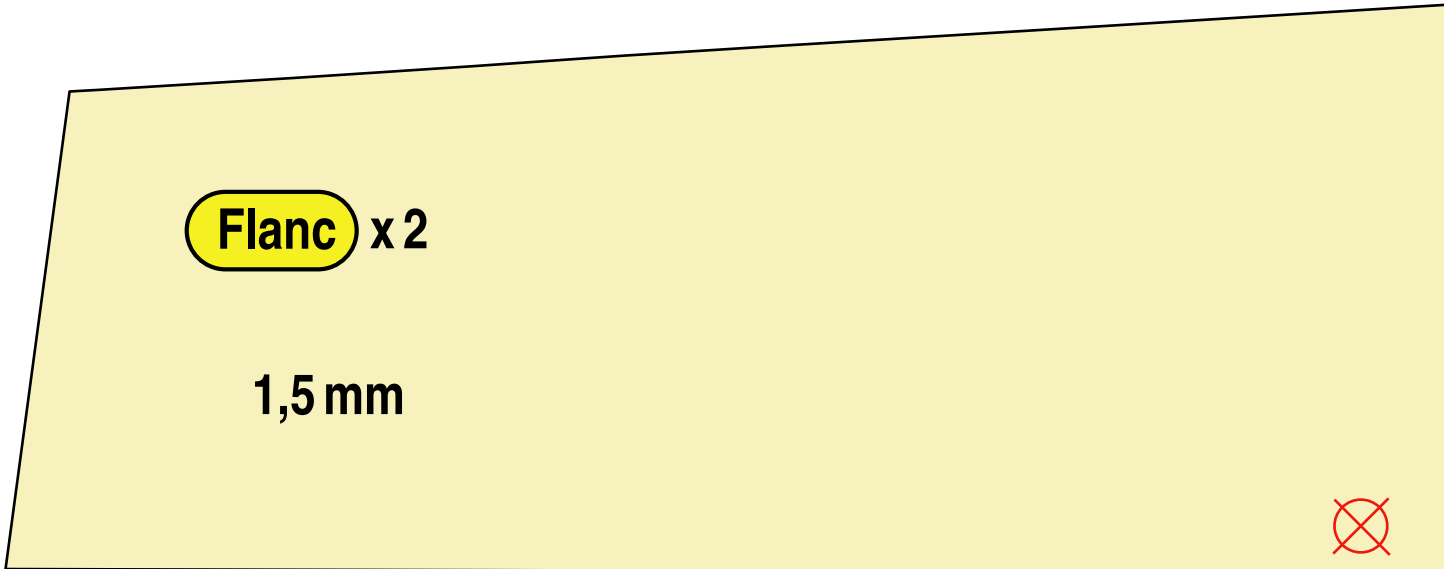
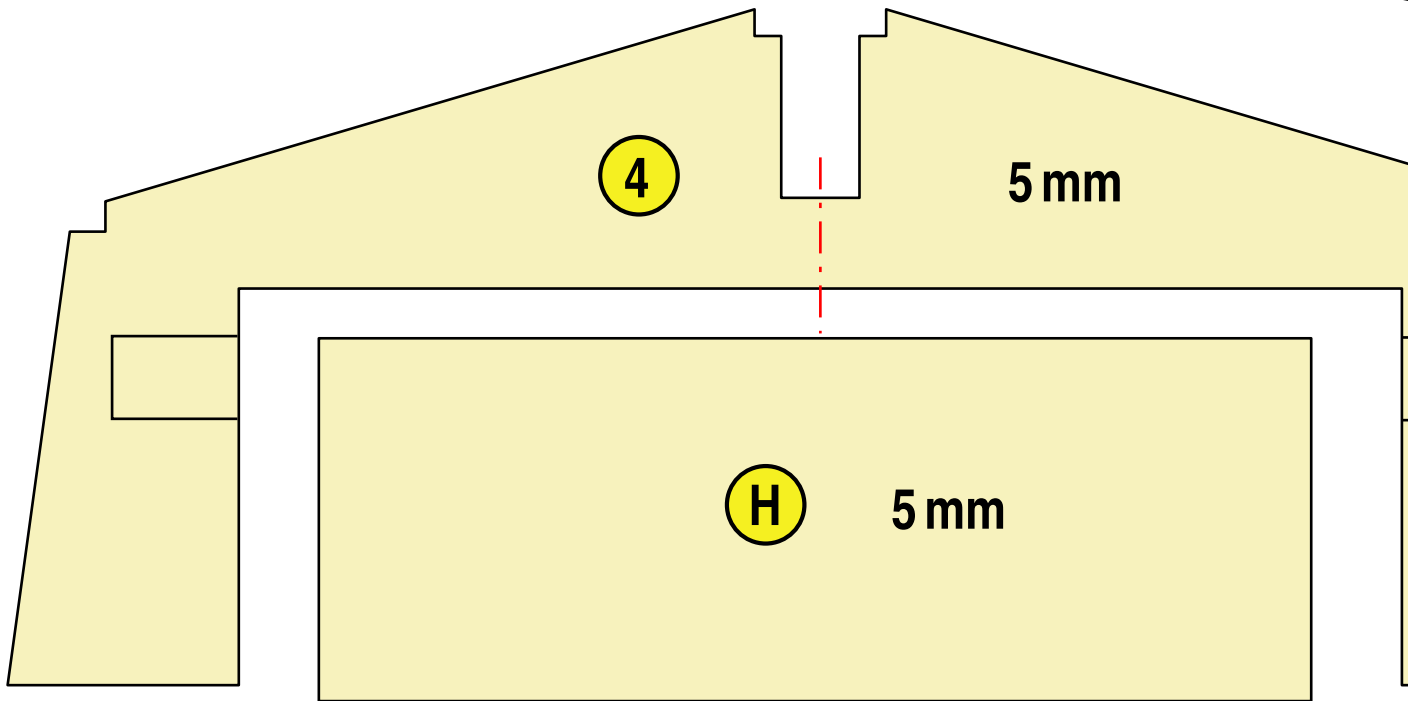
**Z** x2 10 mm







<http://clap54.free.fr>



1,5mm



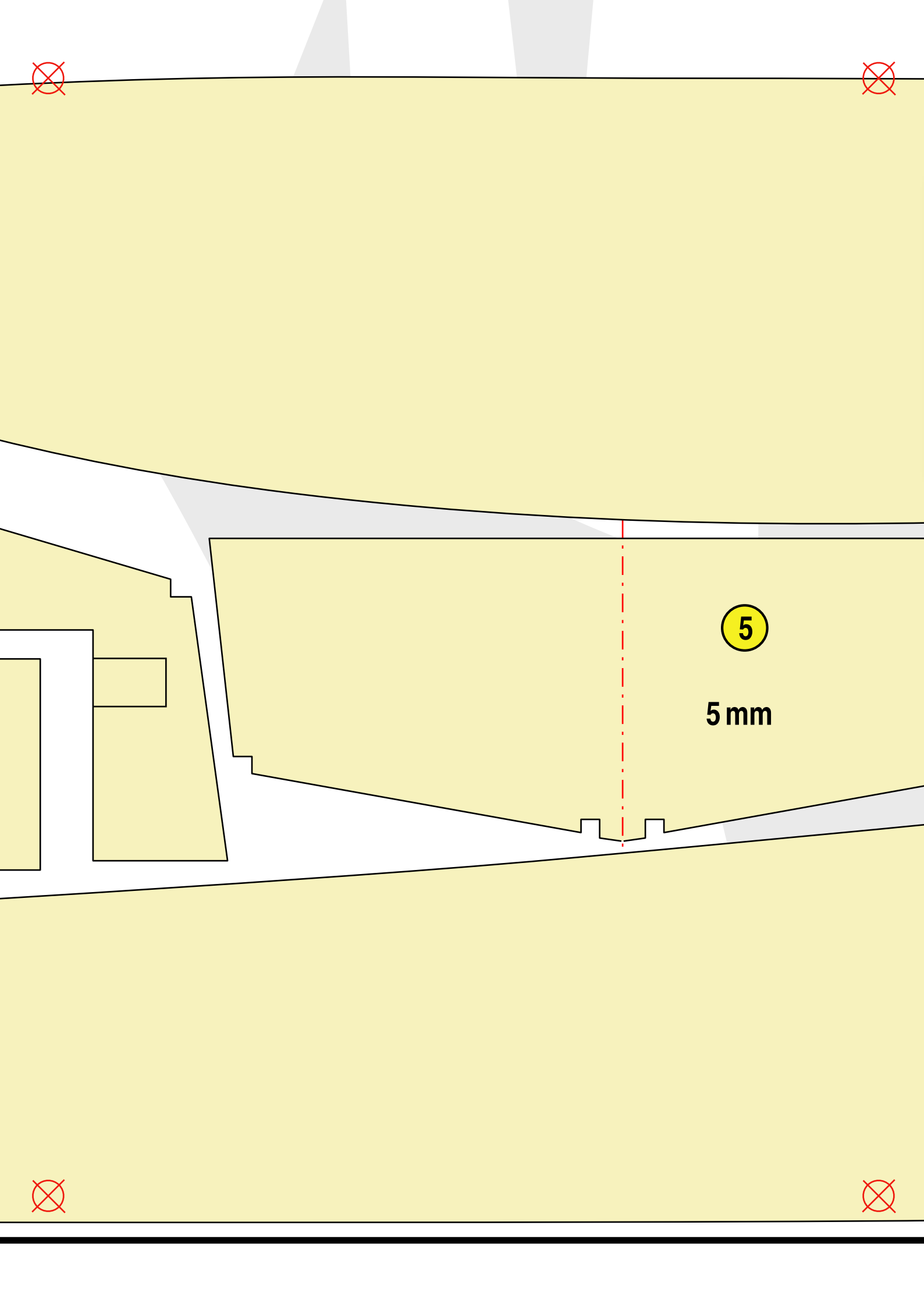
Ce plan est publié sur internet par le CLAP 54.  
Il est mis à disposition sous un contrat  
Creative Commons.

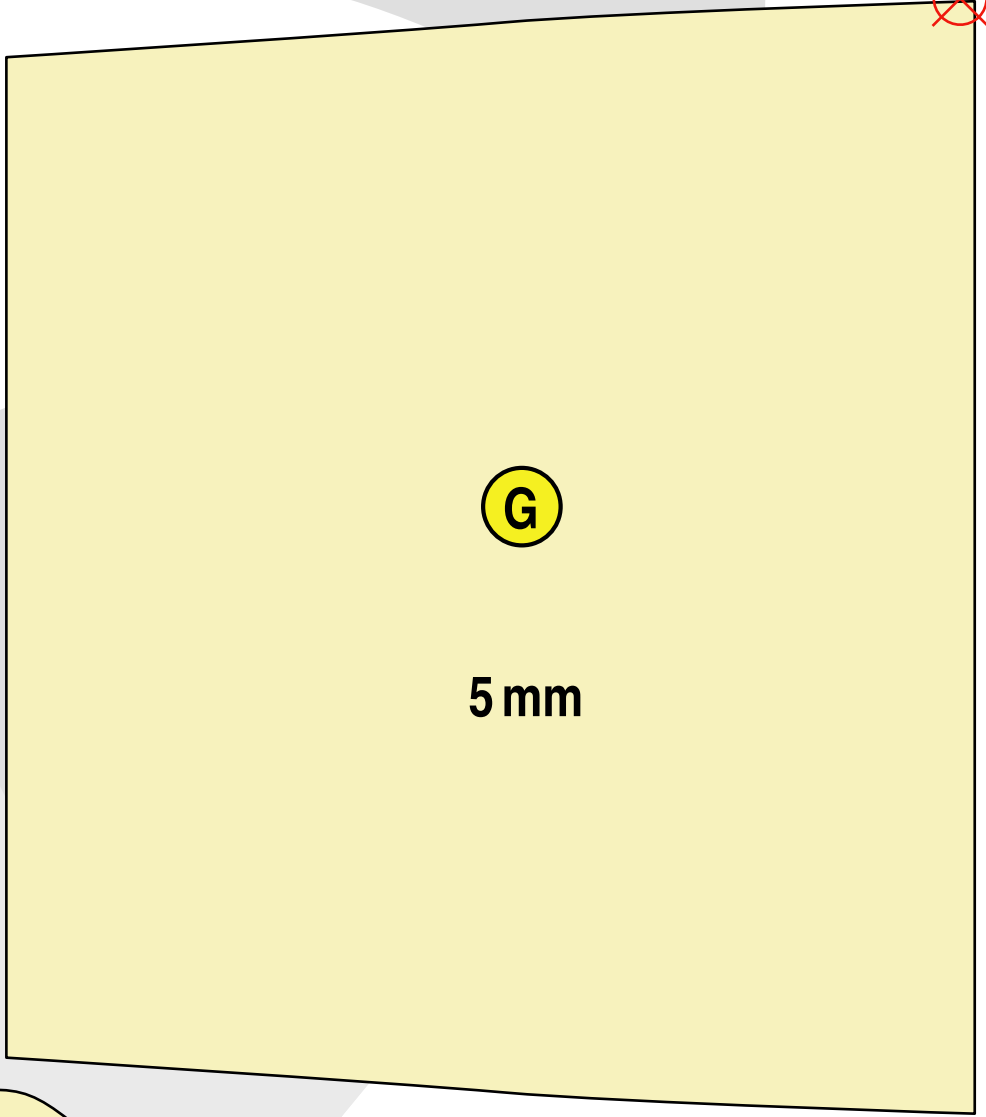
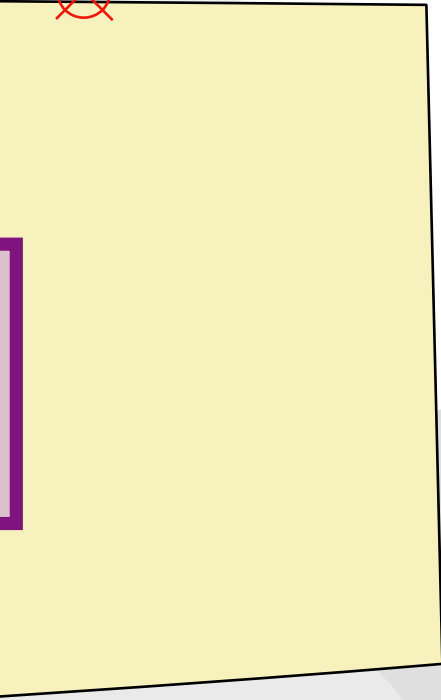
Le plan original et le dossier qui l'accompagne  
sont parus dans le numéro spécial de CLAP  
Modélisme paru en 1979.

J

5 mm







G

5 mm

